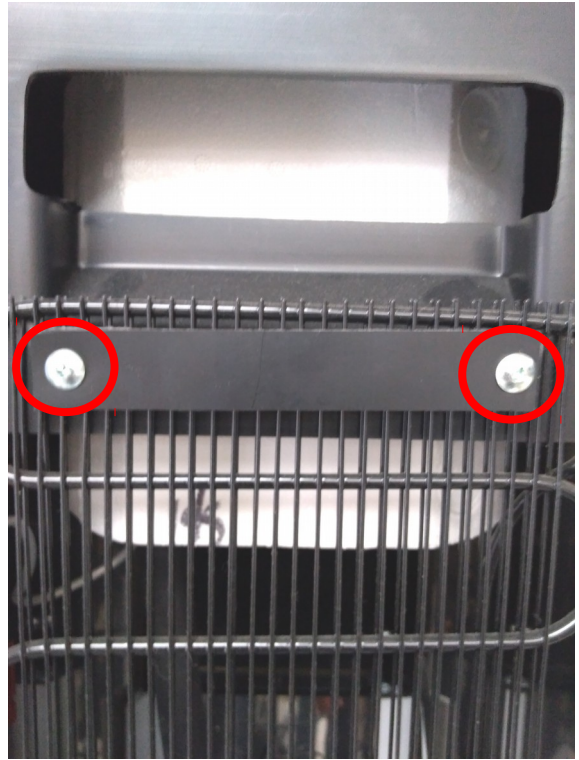


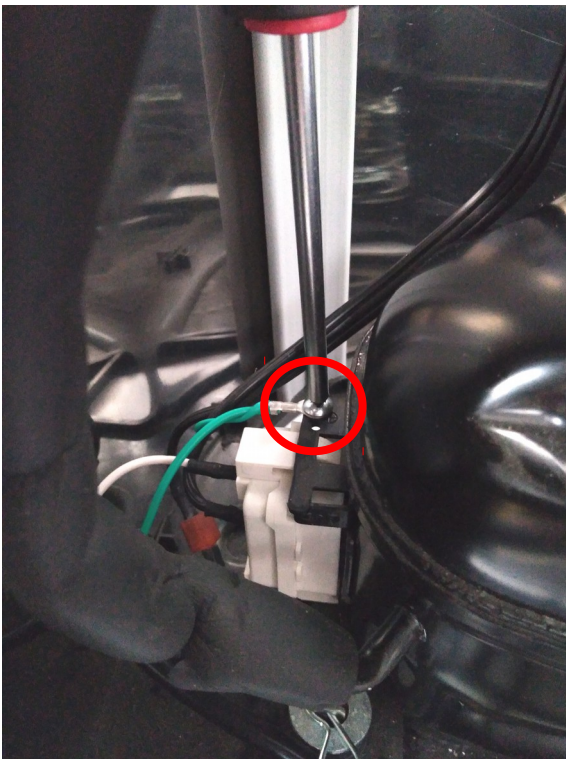
## COMPRESSOR RELAY REPLACEMENT



1- Unplug your cooler, with a #2 Robertson screwdriver loosen the screw at the bottom of the grid in the back of the cooler.



2- With a #2 Robertson screwdriver remove the two screws at the top of grid in the back of the cooler.



3- Unscrew the ground (green) wire eyelet.

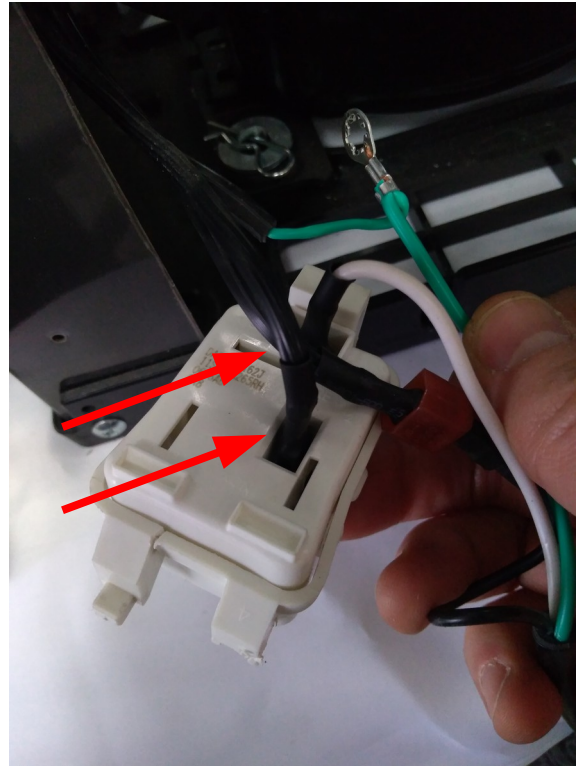


4- With a flat blade screwdriver push and unclip the relay box tab.





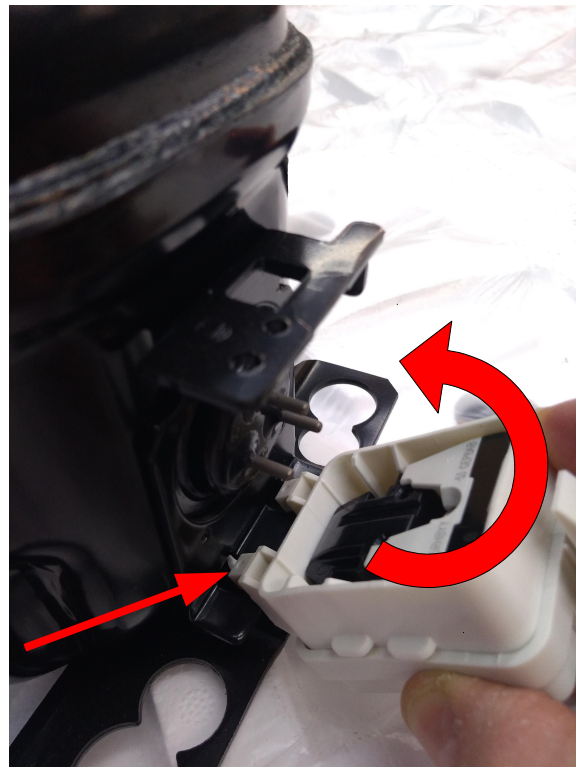
5- Insert your flat screwdriver between the relay and compressor and gently pry the relay backward, you will then be able to disconnect it by hand.



6- Pull out the relay and take note where the connectors go, white in the upper position, black in the lower position.



7- Pull the connectors straight from the old relay, if it is too hard you can help yourself with a pair of pliers, be careful not to damage the connectors and wires



8- Insert the two tabs at the bottom of the new relay in the compressor bracket and tilt it until the connections and tab engage



9- Push the new relay by hand to lock the upper tab and reinstall the two connectors on the relay.



10- With a #2 Robertson screwdriver screw the ground eyelet (green wire) in the compressor bracket.



11- Reinstall the grid in the back of the cooler and screw the two screws on the top and the one at the bottom. Plug back your cooler and test it.