



Halsey Taylor[®]
Satisfying Thirsts Since 1912

Endura II™ Outdoor Tubular Bottle Filling Station

Model 4405BF



This fountain is certified to
NSF/ANSI 61-Annex G, AB1953

GENERAL

Wall-mounted, Endura II™ Steel Outdoor Bottle Filling Station with textured powder-coat finish and E-Coat immersion for year-round beauty with minimum maintenance. The E-coat immersion process coats the inside and outside for the ultimate in corrosion protection. Bottle Filler provides a quick fill at 1 gallon per minute. Laminar flow provides a clean fill with minimal splash and easy maintenance.

PUSHBUTTON ACTUATION MECHANISM

Self-closing, vandal-resistant pushbutton does not require grasping or twisting.

INLET STRAINER

Easily cleaned in-line strainer screen traps particles of 140 microns or larger before they enter the waterway.

WATER INLET & DRAIN OUTLET

Inlet: 3/8" O.D. tubing

Outlet: 1-1/4" tube outlet for 1-1/4" slip joint connection

SUGGESTED SPECIFICATION

Bottle Filling Station shall be wall-mounted with rounded corners and vandal-resistant pushbutton actuation. Shall include a laminar flow for minimal splash and provide 1 gallon per minute fill rate. Shall comply with ADA standards and be certified to lead-free compliance including NSF/ANSI 61-Annex G, AB1953.

Wall-Mount



Standard Finish is Evergreen Textured powder-coat Endura II™. Additional colors available.

Trap and service stop not included.

JOB NAME: _____

ENGINEER/CONTRACTOR NAME: _____

APPROVAL: _____
DATE: _____



Model 4405BF

Endura II™ Wall-Mount

Outdoor Tubular

Bottle Filling Station

(CONTINUED)

MOUNTING INSTRUCTIONS

Refer to diagrams for rough-in of plumbing. This unit is to be mounted on a smooth, flat finished wall surface with adequate support structure. NOTE: Wall mounting structure must be capable of support 300 lb. load on unit. Water service line and waste line are to be assembled as required. Final check for leaks and correct functions should be made.

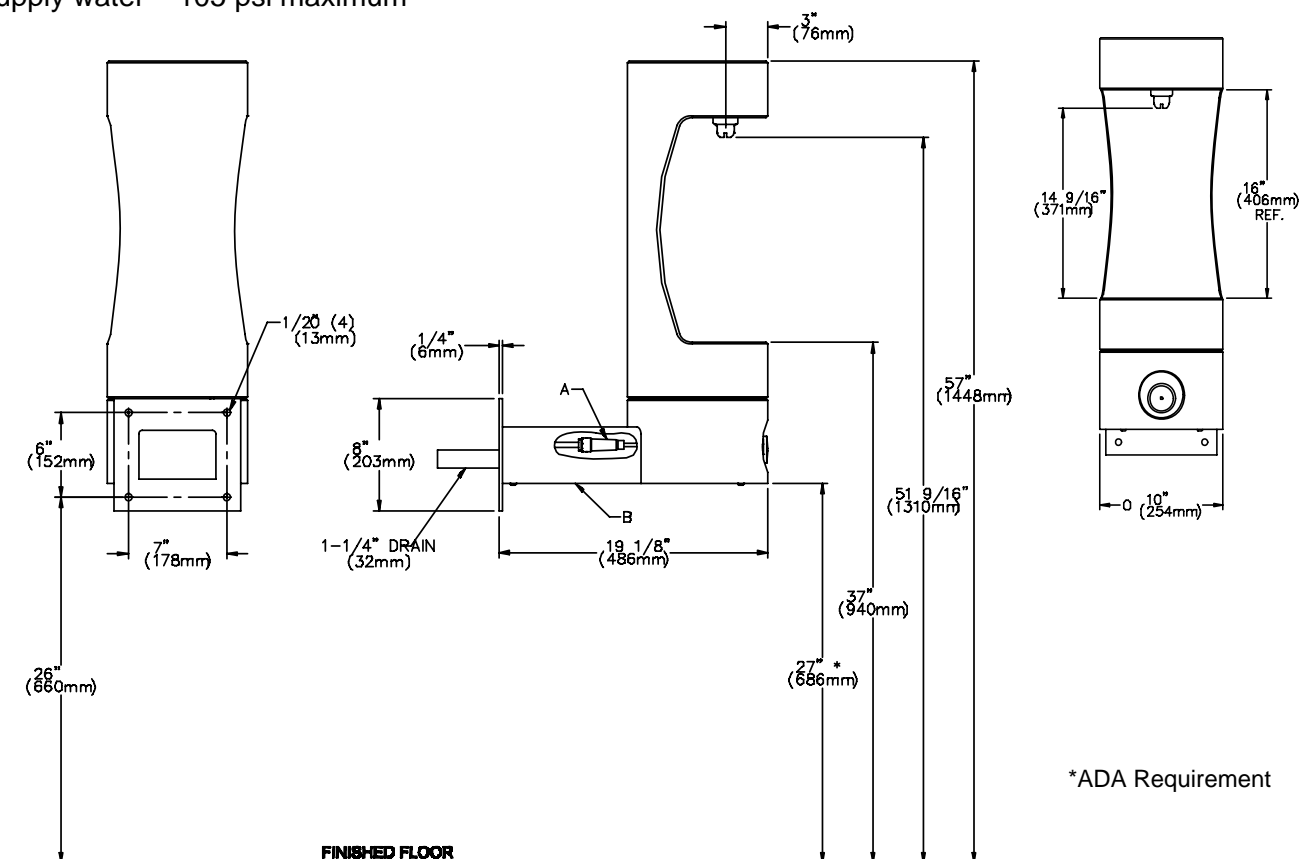
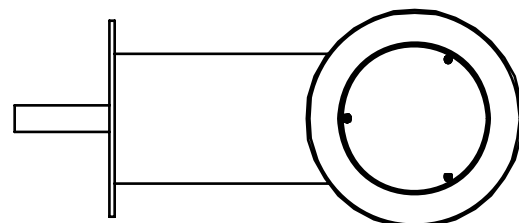
Installation requires trap to be installed in wall. A service supply stop must be installed at the inlet line. Trap and service stop not included.

CAUTION – Unit must be securely bolted to wall.

OPERATING PRESSURES:

Supply water – 105 psi maximum

TOP VIEW



Halsey Taylor®

1-1/4" Trap not provided.