

# ELKAY<sup>®</sup>

## SPECIFICATIONS

### Harmony<sup>®</sup> Undermount Single Bowl Sink Models ELU1716 and ELUH1716

#### GENERAL

Highest quality sink formed of #18 (1.2mm) gauge, type 304 (18-8) nickel bearing stainless steel. Select models available with Statement feature. Undermount.

#### DESIGN FEATURES

Bowl Depth: 7-1/2" (191mm).

Finish ELU1716: Exposed surfaces are hand blended to a Lustrous Satin finish.

Finish ELUH1716: Exposed surfaces are hand blended to a Lustrous Highlighted Satin finish.

Underside: Underside of sink is fully protected by heavy duty Sound Guard™ undercoating to reduce condensation and dampen sound.

#### OTHER

Drain Opening: 3-1/2" (89mm).

Note: All Elkay undermount sinks are designed to affix to the underside of any solid surface countertop.

Installation: See illustrated profile below.

Sink complies with ASME A112.19.3-2008 / CSA B45.4-08.



These sinks are listed by the International Association of Plumbing and Mechanical Officials as meeting the requirements of the Uniform Plumbing Code.

#### OPTIONAL ACCESSORIES

Bottom Grid: LKWOBG1617SS

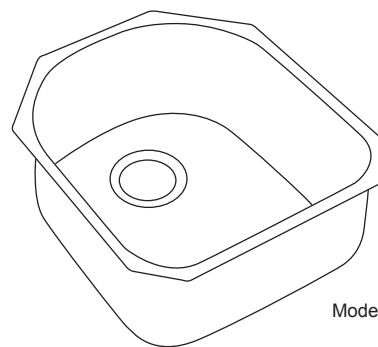
Cutting Board: CB1713 (ELUH model only)

Drain: LK99

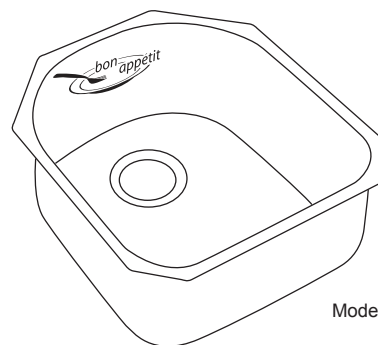
Mounting Clip: LKUCLIP8

Rinsing Baskets: LKWRB1617SS, LKWERBSS

Utensil Caddy for Rinsing Basket: LKWUCSS



Model ELU1716



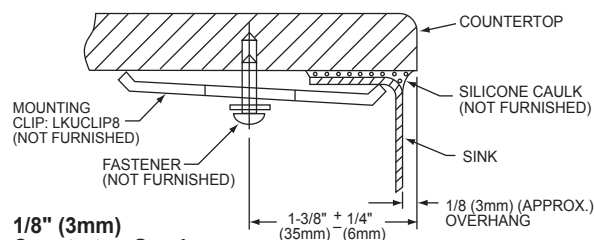
Model ELUH1716BAP

#### SINK PACKAGE(S)

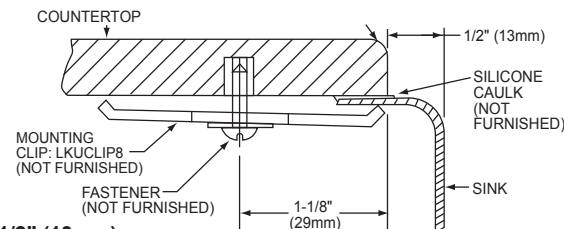
MODEL	SINK	BOTTOM GRID	QTY	DRAIN	QTY
ELU1716DBG	ELU1716	LKWOBG1617SS	1	LK99	1
ELUH1716DBG	ELUH1716	LKWOBG1617SS	1	LK99	1

#### Installation Profile of ELU and ELUH Single Bowl Models

The template provided with each ELU/ELUH sink provides the only type of installation recommended by Elkay.



**1/8" (3mm)  
Countertop Overhang  
(ELU Single bowl)**



**1/2" (13mm)  
Reveal  
(ELUH Single bowl)**

#### OPTIONAL STATEMENT FEATURE

Part No. Suffix for Statement Option	Pattern Name	Pattern Graphic	Pattern Style & Location
BAP	Bon Appetit		Patch – rear wall
BLS	Blossom		Border – all around the sink bowls
GFT	Greek Fret		Border – all around the sink bowls
GRK	Garland Kitchen		Border – all around the sink bowls
CST	Cornerstone		Patch – rear wall
CST2010	Cornerstone		
VIN	Vino		Border – all around the sink bowls

In keeping with our policy of continuing product improvement, Elkay reserves the right to change product specifications without notice. Please visit [elkayusa.com](http://elkayusa.com) for most current version of Elkay product specification sheets.

This specification describes an Elkay product with design, quality and functional benefits to the user. When making a comparison of other producers' offerings, be certain these features are not overlooked.

**Elkay**

[elkayusa.com](http://elkayusa.com)

2222 Camden Court  
Oak Brook, IL 60523

Printed in U.S.A.  
©2010 Elkay

(Rev. 05/10) 1-131H

# ELKAY<sup>®</sup>

## SPECIFICATIONS

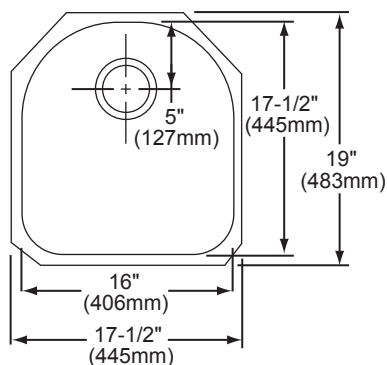
### Harmony<sup>®</sup> Undermount Single Bowl Sink Models ELU1716 and ELUH1716

#### SINK DIMENSIONS\*

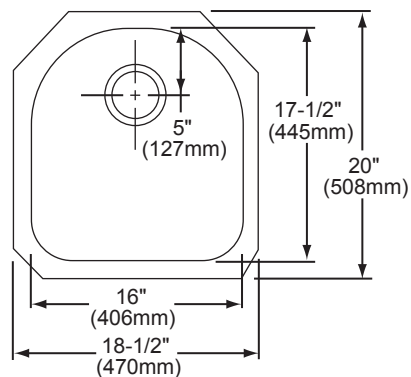
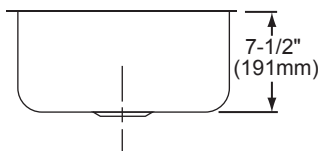
Model Number	Overall		Inside Bowl			Cutout in Countertop	Minimum Cabinet Size
	L	W	L	W	D		
ELU1716	17 1/2 (445mm)	19 (483mm)	16 (406mm)	17 1/2 (445mm)	7 1/2 (191mm)	See Template**	21 (533mm)
ELUH1716	18 1/2 (470mm)	20 (508mm)	16 (406mm)	17 1/2 (445mm)	7 1/2 (191mm)		24 (610mm)
ELUH1716__ (Statement option)	18 1/2 (470mm)	20 (508mm)	16 (406mm)	17 1/2 (445mm)	7 1/2 (191mm)		24 (610mm)

\*Length is left to right. Width is front to back.

\*\*Template #74180224 (ELU1716) or #74180249 (ELUH1716) is packed with every sink.



Model ELU1716 Illustrated



Model ELUH1716 Illustrated