

The Mystic™ by Elkay Undermount Sink Models MYSTIC5014 and MYSTIC5014C

GENERAL

Highest quality sink formed of #16 (1.6mm) gauge, type 304 (18-8) nickel bearing stainless steel.

Comes complete with **LK99** drain.

Model MYSTIC5014C Package includes **LK7122NK** faucet.

DESIGN FEATURES

Bowl Depth: Sloping from 2-1/8" (54mm) to 4-1/2" (114mm).

Finish: Exposed surfaces are hand blended to a lustrous satin finish.

Underside: Fully undercoated to dampen sound and reduce condensation.

OTHER

Drain Opening: 3-1/2" (89mm).

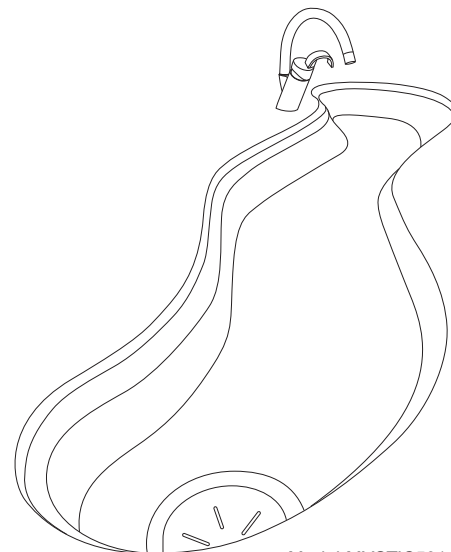
Note: All Elkay undermount sinks are designed to affix easily to the underside of any solid surface countertop.

Installation: See illustrated profile below.

This sink complies with ASME A112.19.3-2008/CSA B45.4-08



These sinks are listed by the International Association of Plumbing and Mechanical Officials as meeting the requirements of the Uniform Plumbing Code.



Model MYSTIC5014C

SINK DIMENSIONS*

Model Number	Overall		Inside Bowl			Cutout in Countertop	Minimum Cabinet Size
	L	W	L	W	D		
MYSTIC5014	51 (1295mm)	13 ^{15/16} (354mm)	48 ^{1/16} (1221mm)	†	2 ^{1/8} to 4 ^{1/2} (54mm) (114mm)	See Template**	54 (1372mm)
MYSTIC5014C	51 (1295mm)	13 ^{15/16} (354mm)	48 ^{1/16} (1221mm)	†	2 ^{1/8} to 4 ^{1/2} (54mm) (114mm)		54 (1372mm)

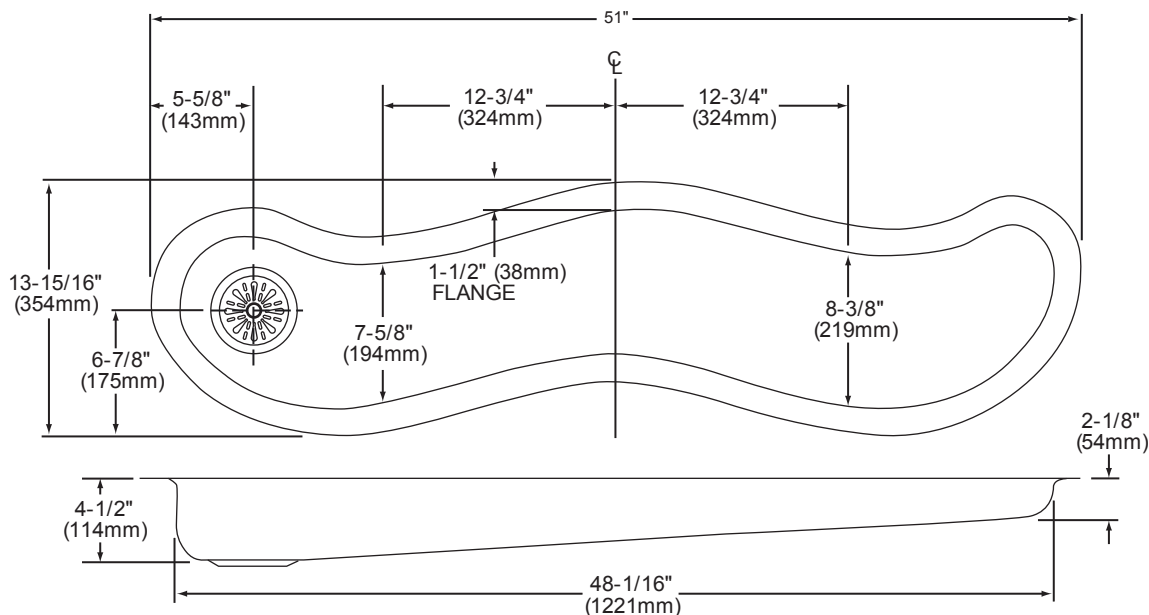
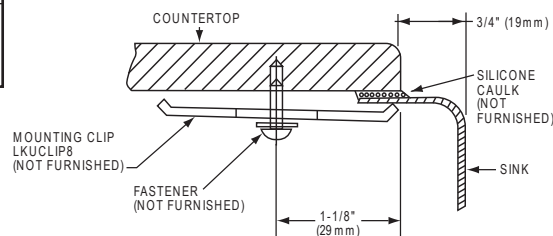
*Length is left to right. Width is front to back.

****Template is packed with every sink.**

†See below for an illustration.

Installation Profile

The template provided with each sink provides the only type of installation recommended by Elkay.



In keeping with our policy of continuing product improvement, Elkay reserves the right to change product specifications without notice. Please visit elkayusa.com for most current version of Elkay product specification sheets.

This specification describes an Elkay product with design, quality and functional benefits to the user. When making a comparison of other producers' offerings, be certain these features are not overlooked

ELKAY[®]

SPECIFICATIONS

The Mystic™ by Elkay Undermount Sink Models MYSTIC5014 and MYSTIC5014C

OPTIONAL ACCESSORIES

Mounting Clips: LKUCLIP8 (2 packages required)

Model Number	Description	Overall			Material/Finish
		L	W	Depth/Thickness	
LKCB5014HW	Cutting Board**	16-1/8" (410mm)	9-15/16" (252mm)	1" (25mm)	Hardwood

*Length is left to right. Width is front to back.

**Sink must be installed with 3/4" reveal for cutting board to fit properly.



LKCB5014HW

In keeping with our policy of continuing product improvement, Elkay reserves the right to change product specifications without notice. Please visit elkayusa.com for most current version of Elkay product specification sheets.

This specification describes an Elkay product with design, quality and functional benefits to the user. When making a comparison of other producers' offerings, be certain these features are not overlooked.