

ELKAY[®]

SPECIFICATIONS

The Mystic and Asana Single Bowl Sinks Models RLR Series Models RLLVR Series – Lavatory with Overflow

GENERAL

Highest quality sink formed of #18 (1.2mm) gauge, type 304 (18-8) nickel bearing stainless steel. Top Mount.

DESIGN FEATURES

Bowl: Depth: See Chart on next page.

Finish: Exposed surfaces are hand polished to a Lustrous Highlighted Satin finish.

Underside: Fully undercoated to reduce condensation and dampen sound.

Models RLLVR12 and RLLVR16 single bowl lavatory sinks come with overflow assembly.

OTHER

Drain Opening: 1-1/2"(38mm) -RLLVR12 and RLLVR16

2"(51mm) - RLR9, RLR12 and RLR16

3-1/2"(89mm)- RLR12FB, and RLR16FB

Sink complies with ASME A112.19.3-2008 / CSA B45.4-08



These sinks are listed by the International Association of Plumbing and Mechanical Officials as meeting the requirements of the Uniform Plumbing Code.

OPTIONAL ACCESSORIES

Bottom Grid: LKWRBG12SS (RLR12FB)

LKWRBG16SS (RLR16FB)

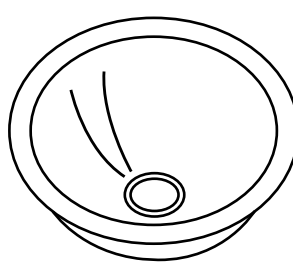
Drain: LK174, LK175 (RLLVR12, RLLVR16)

LK36 (RLR12, RLR16)

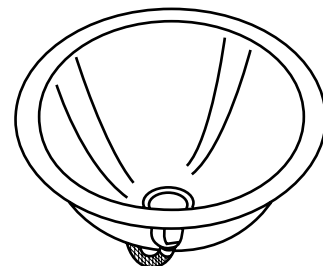
LK99 (RLR12FB, RLR16FB)

Rinsing Basket: LKWRB12SS (RLR12FB)

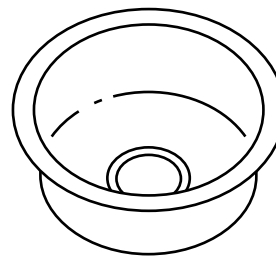
Utensil Caddy for Rinsing Basket: LKWUCSS



Model RLR9
Model RLR12
Model RLR16

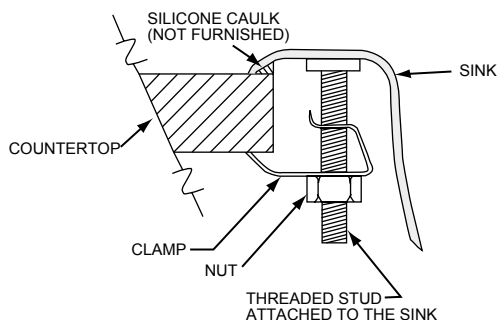


Model RLLVR12
Model RLLVR16



Model RLR12FB
Model RLR16FB

Installation Profile



SEE OTHER SIDE FOR PRODUCT DIMENSIONS.

In keeping with our policy of continuing product improvement, Elkay reserves the right to change product specifications without notice.

This specification describes an Elkay product with design, quality and functional benefits to the user. When making a comparison of other producers' offerings, be certain these features are not overlooked.

Elkay

www.elkayusa.com

2222 Camden Court
Oak Brook, IL 60523

Printed in U.S.A.
©2010 Elkay

(Rev. 3/10) 1-77F

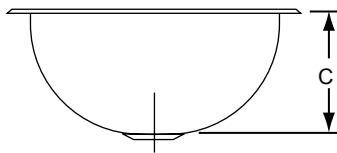
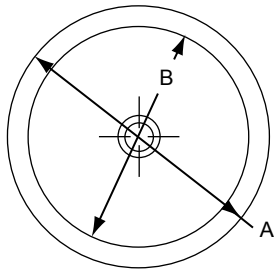
The Mystic and Asana Single Bowl Sinks
Models RLR Series
Models RLLVR Series – Lavatory with Overflow

ELKAY®
SPECIFICATIONS

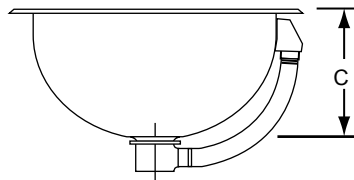
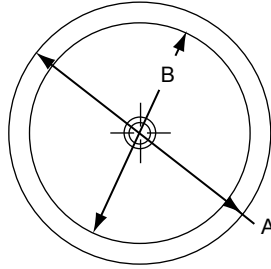
SINK DIMENSIONS*

Model Number	Outside Diameter	Inside Diameter	Depth	Drain Opening	Cutout in Countertop	Minimum Cabinet Size	Includes Overflow Assembly
	A	B	C				
RLR9	11 ³ / ₈ (289mm)	9 (229mm)	4 ³ / ₄ (121mm)	2 (51mm)	Use sink upside down as template and cut 5/16" INSIDE sink outline.	15 (381mm)	No
RLR12	14 ³ / ₈ (365mm)	12 (305mm)	6 (152mm)	2 (51mm)		18 (457mm)	No
RLR12FB	14 ³ / ₈ (365mm)	12 (305mm)	6 (152mm)	3 ¹ / ₂ (89mm)		18 (381mm)	No
RLLVR12	14 ³ / ₈ (365mm)	12 (305mm)	6 (152mm)	1 ¹ / ₂ (38mm)		18 (381mm)	Yes
RLR16	18 ³ / ₈ (467mm)	16 (406mm)	8 (203mm)	2 (51mm)		24 (610mm)	No
RLR16FB	18 ³ / ₈ (467mm)	16 (406mm)	8 (203mm)	3 ¹ / ₂ (89mm)		24 (610mm)	No
RLLVR16	18 ³ / ₈ (467mm)	16 (406mm)	8 (203mm)	1 ¹ / ₂ (38mm)		24 (610mm)	Yes

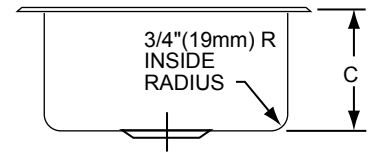
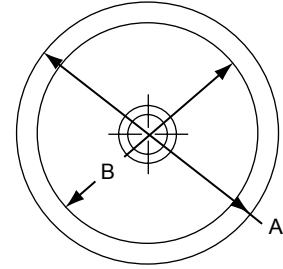
*Length is left to right. Width is front to back.



Model RLR9, RLR12, RLR16 Illustrated



Model RLLVR12, RLLVR16 Illustrated



Model RLR12FB, RLR16FB Illustrated