

DAYTON® SPECIFICATIONS

Dayton® Elite Double Bowl Sink Models DSEW23321, DSEW23322 DSEJW23321 and DSEJW23322

GENERAL

Sink is formed of #20 gauge, 300 series, nickel-bearing stainless steel. Top mount.

DESIGN FEATURES

Bowl Depth: 8-1/16" (205mm).

Faucet Deck: Raised.

Coved Corners: 4" (102mm) vertical and 3-1/4" (83mm) horizontal radius.

Finish: Exposed surfaces are polished to an Elite Satin finish.

Underside: Undercoated on bottom of bowl to reduce condensation and dampen sound.

OTHER

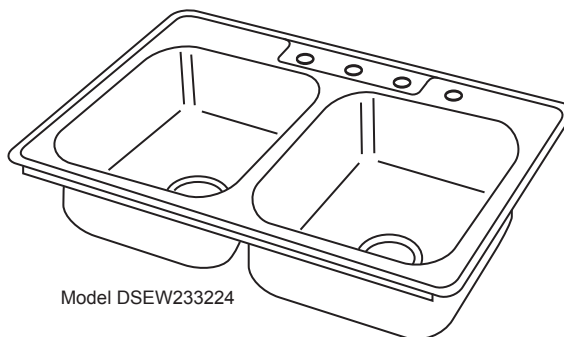
Drain Opening: 3-1/2" (89mm).

Note: Unless otherwise specified, sink is furnished with 4 faucet holes as shown.

Master Pack: Sinks are nested with rim wrappers in quantities of 10 or 40.

Installation Hardware: Included for 3/4" (19mm) countertop.

These sinks comply with ASME A112.19.3-2008 CSA B45.4-08.



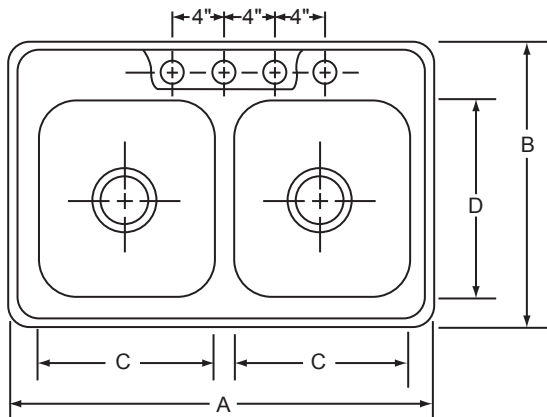
Model DSEW233224



SINK DIMENSIONS (INCHES)*

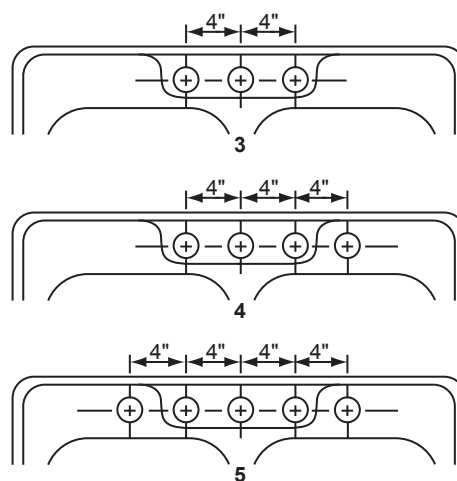
U-Channel Model Number	J-Channel Model Number	Master Pack	Overall		Inside Each Bowl			Cutout in Countertop (1-1/2" (38mm) Radius Corners)		No of 1-1/2" (38mm) Faucet Holes*	Minimum Cabinet Size
			L	W	L	W	D	L	W		
			A	B	C	D	E	L	W		
DSEW1023321	NA	10	33	21 1/4	14	15 3/4	8 1/16	32 3/8	20 5/8	3, 4 or 5	36
			838 (mm)	559 (mm)	356 (mm)	400 (mm)	205 (mm)	822 (mm)	525 (mm)		914 (mm)
DSEW4023321	NA	40	33	21 1/4	14	15 3/4	8 1/16	32 3/8	20 5/8	3, 4 or 5	36
			838 (mm)	559 (mm)	356 (mm)	400 (mm)	205 (mm)	822 (mm)	525 (mm)		914 (mm)
DSEW1023322	DSEJW1023322	10	33	22	14	15 3/4	8 1/16	32 3/8	21 3/8	3, 4 or 5	36
			838 (mm)	559 (mm)	356 (mm)	400 (mm)	205 (mm)	822 (mm)	543 (mm)		914 (mm)
DSEW4023322	DSEJW4023322	40	33	22	14	15 3/4	8 1/16	32 3/8	21 3/8	3, 4 or 5	36
			838 (mm)	559 (mm)	356 (mm)	400 (mm)	205 (mm)	822 (mm)	543 (mm)		914 (mm)

*Length is left to right. Width is front to back.

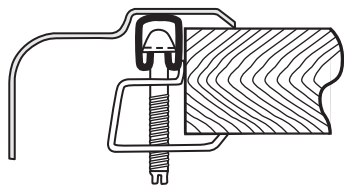


E is Bowl Depth

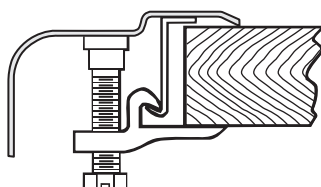
HOLE DRILLING CONFIGURATIONS



U-Channel Type Mounting System



J-Channel Type Mounting System



In keeping with our policy of continuing product improvement, Elkay reserves the right to change product specifications without notice.

This specification describes an Elkay product with design, quality and functional benefits to the user. When making a comparison of other producers' offerings, be certain these features are not overlooked.