

**No Lead Simulated Semi-Recessed
Drinking Fountain, Wall Mount –
Fully Exposed Barrier-Free Access
Model EDFP19C**

ELKAY®

SPECIFICATIONS

GENERAL

Wall mounted drinking fountain constructed of #20 gauge, 300 series, stainless steel polished to a lustrous satin finish.

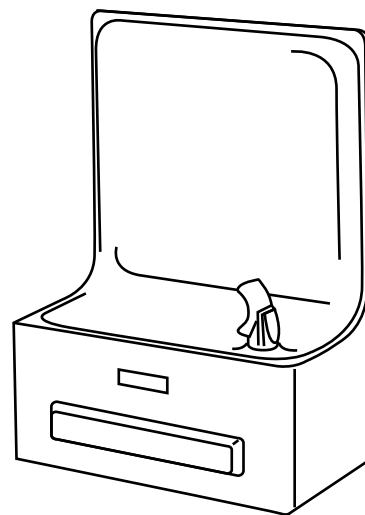
Contoured basin minimizes splashing and has exclusive Flexi-Guard® safety bubbler to prevent accidental mouth injuries. Keyed in location to prevent rotation. Easy to operate stainless steel front push bar features raised letters to aid the visually impaired. Patented* valve and in-line flow regulator provides stream from 20 to 105 psi.

NO LEAD DESIGN

THIS DRINKING FOUNTAIN COMPLIES WITH THE LEAD-FREE DEFINITION IN THE SAFE DRINKING WATER ACT OF 1986 AND LEAD CONTAMINATION CONTROL ACT OF 1988.

Elkay Drinking Fountains are manufactured with a waterway system utilizing copper components and completely lead-free material. These waterways have no lead because all leaded materials, such as leaded brass, have been removed.

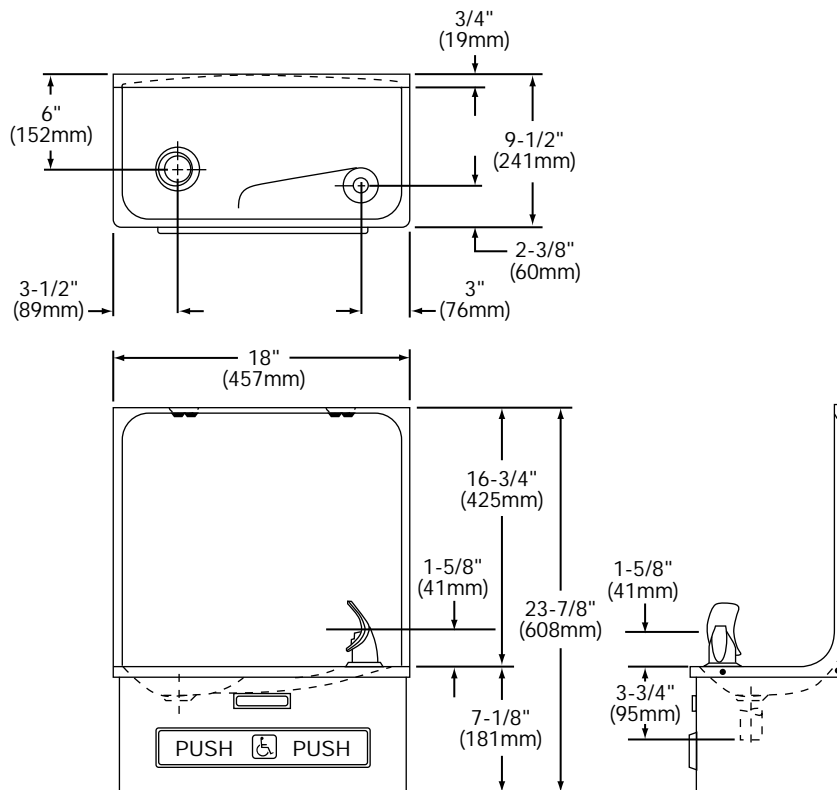
This fountain is certified by WQA to lead-free compliance including **NSF/ANSI 61-ANNEX G, AB 1953**.



Model EDFP19C

CONSTRUCTION

Furnished complete with Flexi-Guard®, fully assembled front push bar, patented* valve and in-line flow regulator (20 to 105 p.s.i.), bottom cover plate and domed strainer. No trap furnished.



In keeping with our policy of continuing product improvement, Elkay reserves the right to change product specifications without notice.

* Patent #4,481,971

Elkay Manufacturing Company

www.elkay.com

2222 Camden Court
Oak Brook, IL 60523

Printed in U.S.A.
©2010 Elkay Mfg. Co.

(Rev. 3/10) 14-10F

**No Lead Simulated Semi-Recessed
Drinking Fountain, Wall Mount -
Fully Exposed Barrier-Free Access
Model EDPF19C**

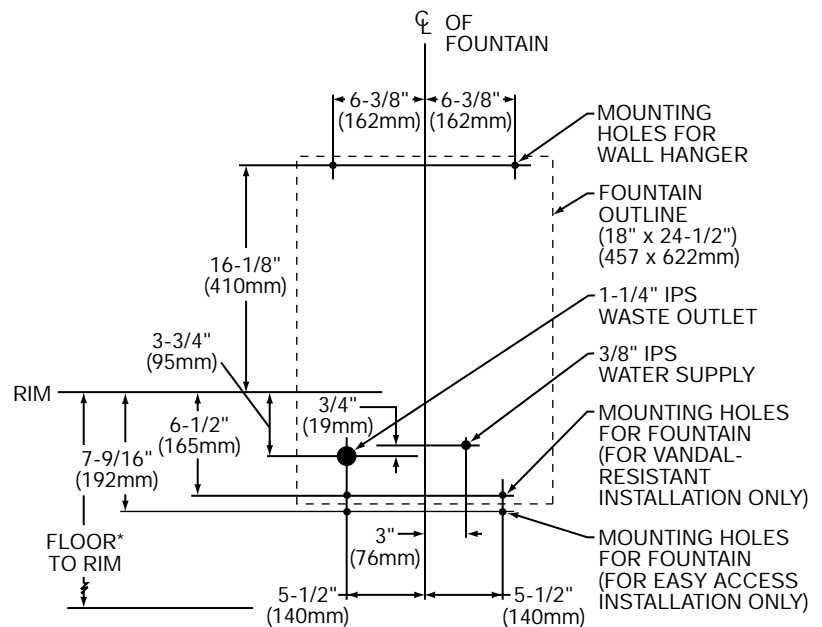
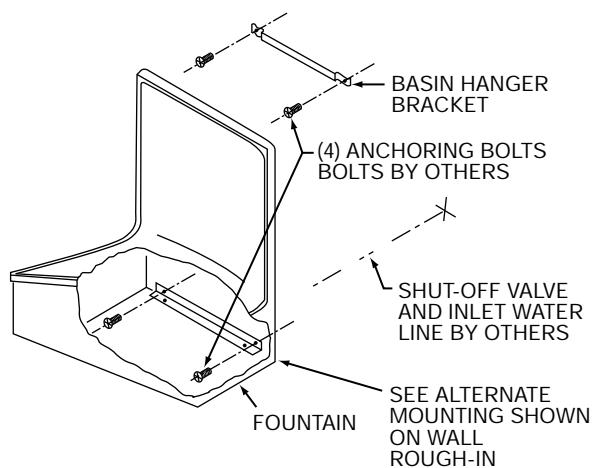
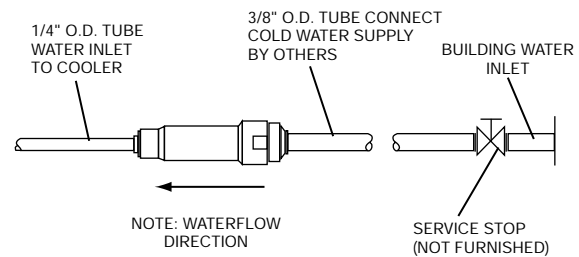
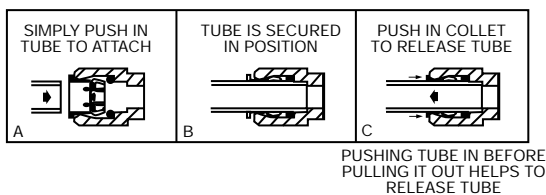
ELKAY®

ROUGH-IN DIMENSIONS

INSTALLER NOTE

THIS DRINKING FOUNTAIN IS FURNISHED WITH A BUBBLER AND VALVE INCLUDING ALL CONNECTING FITTINGS WHICH ARE MANUFACTURED OF COMPLETELY LEAD FREE MATERIAL. IT IS RECOMMENDED THAT SHUT OFF VALVE AND SUPPLY TUBING SUPPLIED BY OTHERS BE NON-METALLIC.

OPERATION OF QUICK CONNECT FITTINGS



WALL ROUGH-IN

*34-1/8" (823mm) RECOMMENDED HEIGHT FROM FLOOR TO PROVIDE 27" CLEARANCE FROM FLOOR TO UNDERSIDE.