

# ELKAY®

## SPECIFICATIONS

No Lead Freeze-Resistant Drinking Fountain  
Soft Sides® – Wall Mount – Fully Exposed  
ANSI/NSF61 Compliant  
Model EDFP210FPK

### GENERAL

Wall mounted freeze-resistant drinking fountain for all weather applications. Constructed of #18 gauge, type 304, stainless steel polished to a satin finish. Includes freeze-resistant box LKFRB1 to be mounted on interior heated wall where the temperature does not drop below 50°F (10°C).

Contoured basin minimizes splashing with vandal-resistant bubbler keyed in location to prevent rotation. Heavy-duty push-button control is vandal-resistant.

### NO LEAD DESIGN

**THIS DRINKING FOUNTAIN COMPLIES WITH THE LEAD-FREE DEFINITION IN THE SAFE DRINKING WATER ACT OF 1986 AND LEAD CONTAMINATION CONTROL ACT OF 1988.**

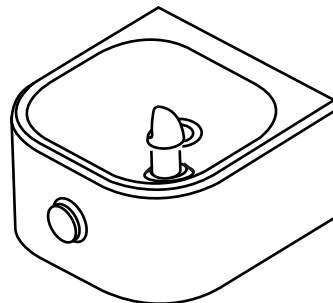
Elkay Drinking Fountains are manufactured with a waterway system utilizing copper components and completely lead-free material. These waterways have no lead because all leaded materials, such as leaded brass, have been removed.

This drinking fountain is certified to **ANSI/NSF61**.

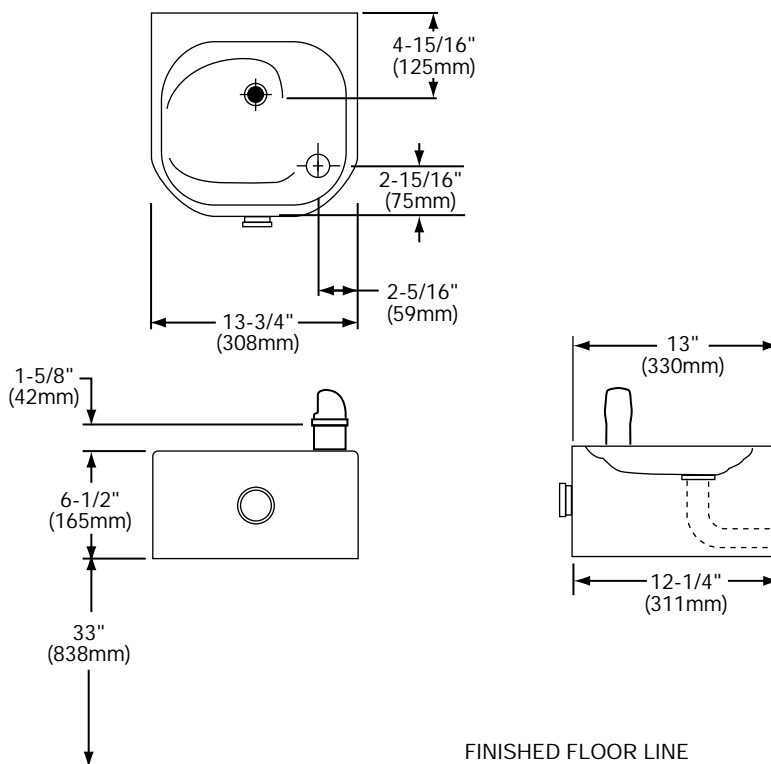
### CONSTRUCTION

**EDFP210FP** furnished complete with vandal-resistant bubbler heavy-duty push-button and vandal-resistant bottom cover plate.

LKFRB1 includes box with separate front louvered panel. Patented\* valve and in-line flow regulator provide stream from 20 to 105 psi (138 to 724 kPa) water pressure. Operated by adjustable cable system. Trap and drain tube included for proper installation.



Model EDFP210FPK



\* Patent #4,481,971

*In keeping with our policy of continuing product improvement, Elkay reserves the right to change product specifications without notice.*

*This specification describes an Elkay product with design, quality and functional benefits to the user. When making a comparison of other producers' offerings, be certain these features are not overlooked.*

No Lead Freeze-Resistant Drinking Fountain  
Soft Sides® – Wall Mount – Fully Exposed  
ANSI/NSF61 Compliant  
Model EDFP210FPK

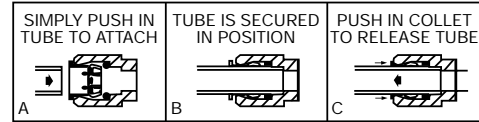
# ELKAY®

## ROUGH-IN DIMENSIONS

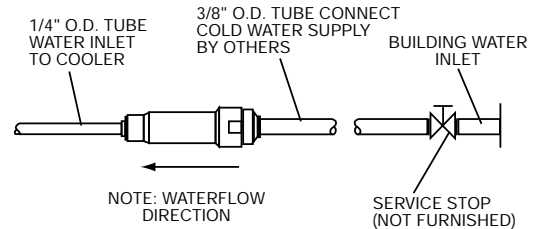
### INSTALLER NOTE

THIS DRINKING FOUNTAIN IS FURNISHED WITH A BUBBLER AND VALVE INCLUDING ALL CONNECTING FITTINGS WHICH ARE MANUFACTURED OF COMPLETELY LEAD FREE MATERIAL. IT IS RECOMMENDED THAT SHUT OFF VALVE AND SUPPLY TUBING SUPPLIED BY OTHERS BE NON-METALLIC.

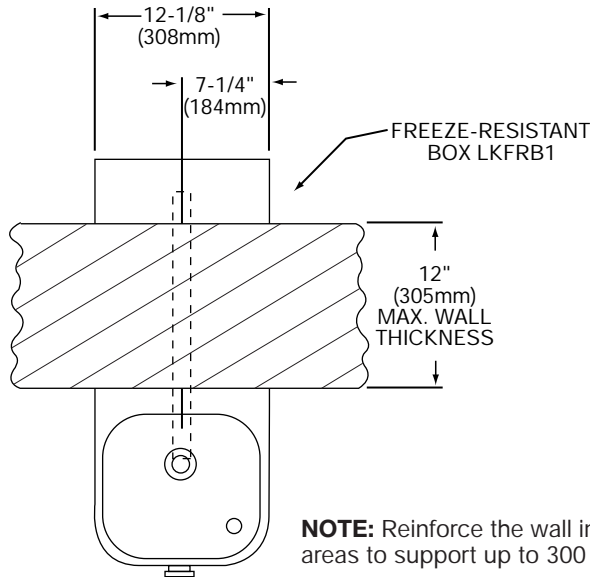
### OPERATION OF QUICK CONNECT FITTINGS



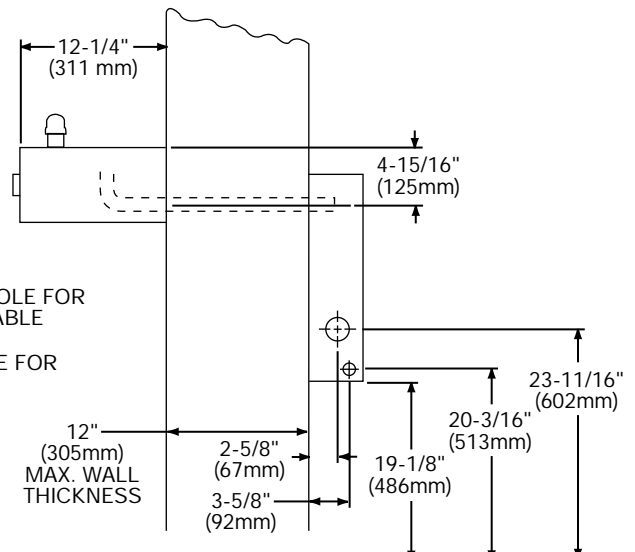
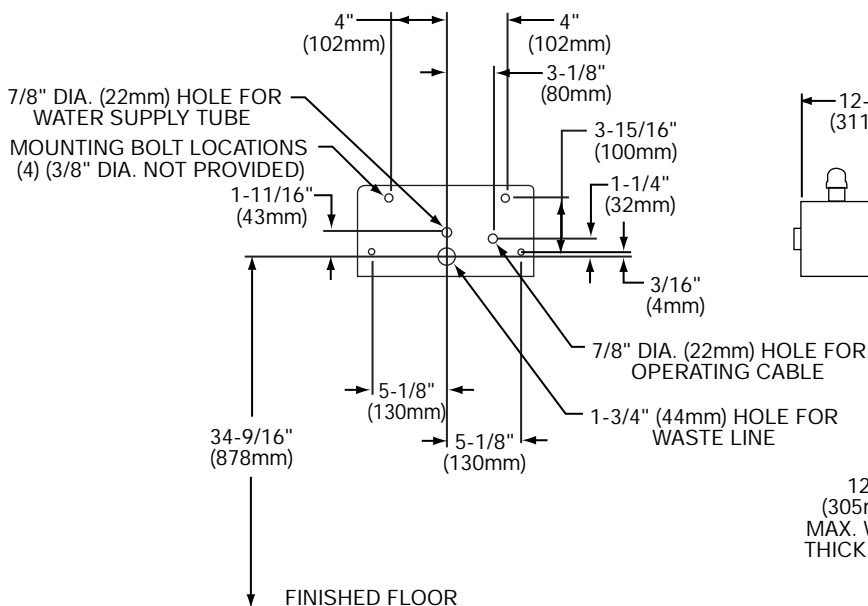
PUSHING TUBE IN BEFORE PULLING IT OUT HELPS TO RELEASE TUBE



**WARNING:** The freeze-resistant box must be installed on an interior heated wall where the temperature does not drop below 50°F (10°C). The front of the box must have unobstructed air flow. Failure to maintain the interior wall temperature and the inside of the freeze-resistant box above 50° F (10°C) can result in damage to the box which could result in unrestricted water flow.



**NOTE:** Reinforce the wall in the shaded areas to support up to 300 lbs. static load.



NOTE: ALL DIMENSIONS ARE TAKEN FROM THE FINISHED FLOOR ON THE SIDE OF THE WALL THAT THE FOUNTAIN IS ON.