

# ELKAY<sup>®</sup>

## SPECIFICATIONS

No Lead Freeze-Resistant Drinking Fountain  
Soft Sides<sup>®</sup> – Wall Mount Fully Exposed  
Barrier-Free Access – ANSI/NSF61 Compliant  
Model EDP214FPK

### GENERAL

Wall mounted freeze-resistant drinking fountain for all weather applications. Constructed of #18 gauge, type 304, stainless steel polished to a satin finish. Includes freeze-resistant box LKFRB1 to be mounted on interior heated wall where the temperature does not drop below 50°F (10°C).

Contoured basin minimizes splashing with vandal-resistant bubbler keyed into position to prevent rotation. Heavy-duty push button control is vandal-resistant.

### ADA COMPLIANT

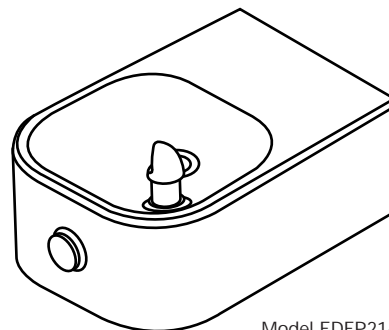
**THIS DRINKING FOUNTAIN COMPLIES WITH THE REQUIREMENTS OF A.D.A. (AMERICANS WITH DISABILITIES ACT) WHEN PROPERLY INSTALLED.**

### NO LEAD DESIGN

**THIS DRINKING FOUNTAIN IS CERTIFIED TO BE LEAD-FREE AS DEFINED BY THE SAFE DRINKING WATER ACT.**

Elkay Drinking Fountains are manufactured with a waterway system utilizing copper components and completely lead-free material. These waterways have no lead because all leaded materials, such as leaded brass, have been removed.

This drinking fountain is certified to **ANSI/NSF61, Section 9.**

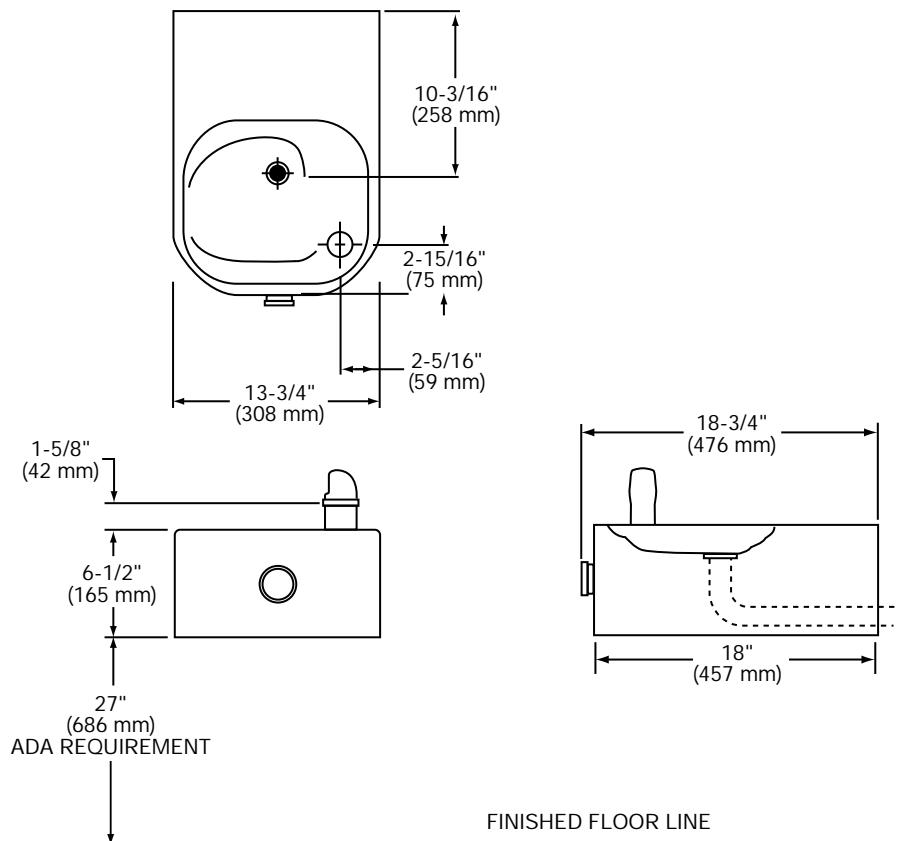


Model EDP214FPK

### CONSTRUCTION

**EDP214FP** furnished complete with vandal-resistant bubbler, heavy-duty push button and vandal-resistant bottom cover plate.

**LKFRB1** includes box with separate front louvered panel. Patented\* valve and in-line flow regulator provide stream from 20 to 105 psi (138 to 724kPa) water pressure. Operated by adjustable cable system. Trap and drain tube included for proper installation.



\* Patent #4,481,971

*In keeping with our policy of continuing product improvement, Elkay reserves the right to change product specifications without notice.*

*This specification describes an Elkay product with design, quality and functional benefits to the user. When making a comparison of other producers' offerings, be certain these features are not overlooked.*

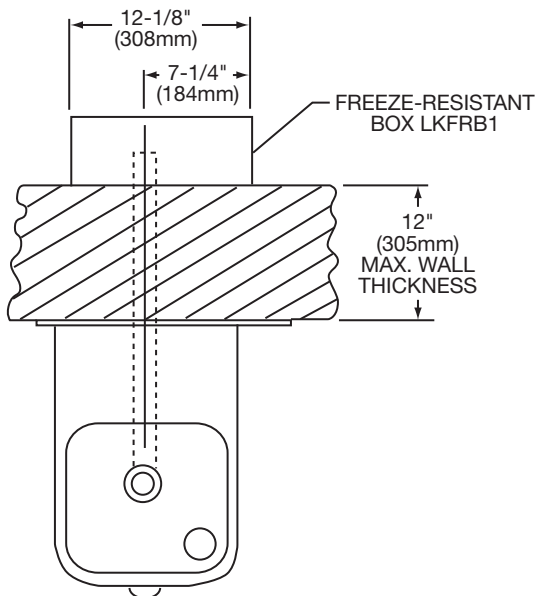
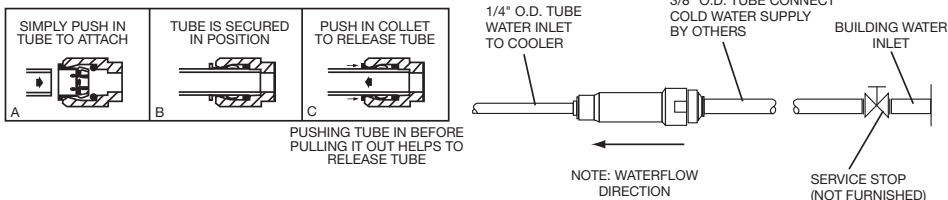
**No Lead Freeze-Resistant Drinking Fountain**  
**Soft Sides® – Wall Mount Fully Exposed**  
**Barrier-Free Access – ANSI/NSF61 Compliant**  
**Model EDFP214FPK**

**ELKAY®**  
**ROUGH-IN DIMENSIONS**

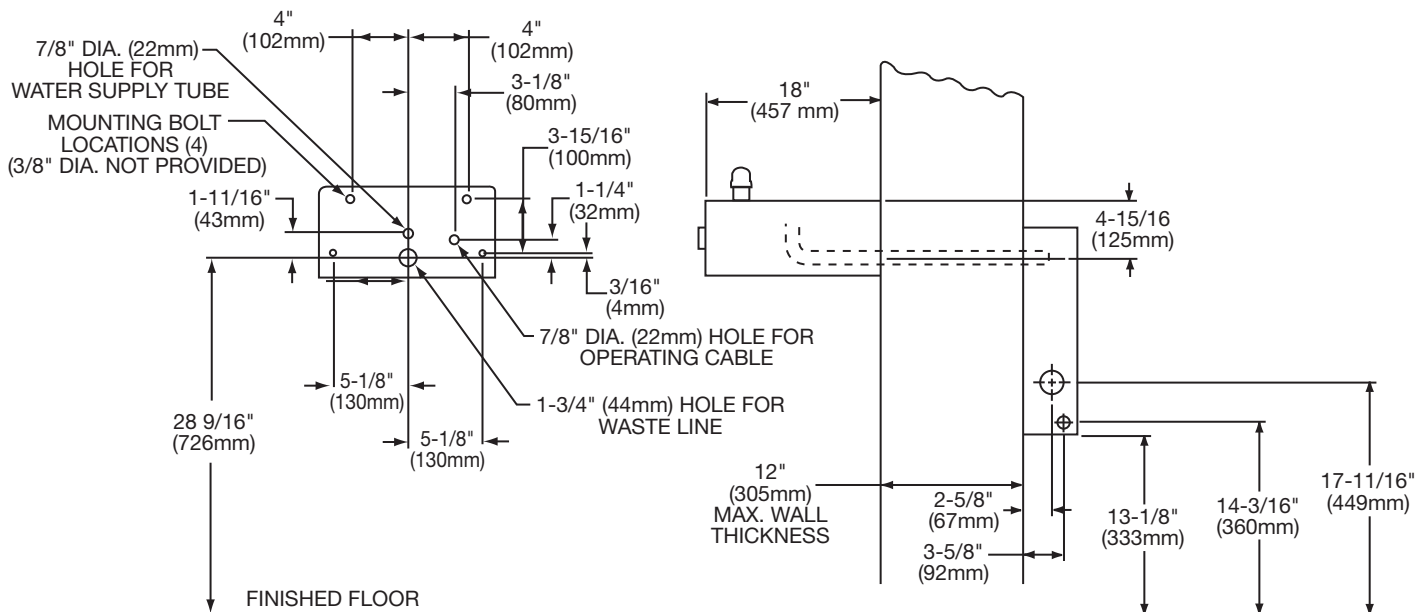
**INSTALLER NOTE**

THIS DRINKING FOUNTAIN IS FURNISHED WITH A BUBBLER AND WATERWAY WITH ALL CONNECTING FITTINGS WHICH ARE MANUFACTURED OF COMPLETELY LEAD FREE MATERIAL. IT IS RECOMMENDED THAT SHUT OFF VALVE AND SUPPLY TUBING SUPPLIED BY OTHERS BE NON-METALLIC.

**OPERATION OF QUICK CONNECT FITTINGS**



**WARNING:** The freeze-resistant box must be installed on an interior heated wall where the temperature does not drop below 50°F (10°C). The front of the box must have unobstructed air flow. Failure to maintain the interior wall temperature and the inside of the freeze-resistant box above 50°F (10°C) can result in damage to the box which could result in unrestricted water flow.



NOTE: ALL DIMENSIONS ARE TAKEN FROM THE FINISHED FLOOR ON THE SIDE OF THE WALL THAT THE FOUNTAIN IS ON.