

DAYTON® SPECIFICATIONS

Dayton® Elite Double Bowl Sink Models DSE23321, DSE23322 and DSEJ23322 Series

GENERAL

Sink is formed of #20 gauge, 300 series, nickel-bearing stainless steel. Top mount.

DESIGN FEATURES

Bowl Depth: 8-1/16".

Faucet Deck: Raised.

Coved Corners: 3" vertical and 2-1/4" horizontal radius.

Finish: Exposed surfaces are polished to a ultra radiant finish.

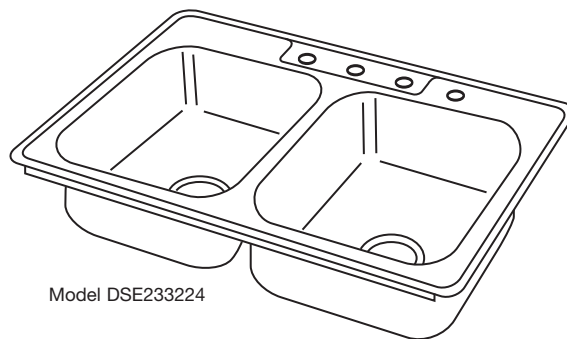
Underside: Fully undercoated to prevent condensation and dampen sound.

OTHER

Drain Opening: 3-1/2".

Note: Unless otherwise specified, sink is furnished with 4 faucet holes as shown.

These sinks do not comply with ASME A112.19.3.

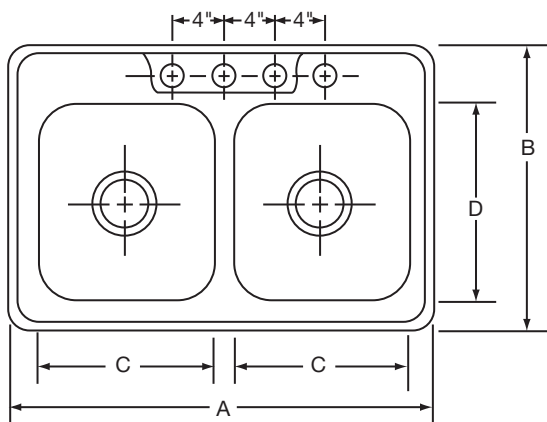


Model DSE233224

SINK DIMENSIONS (INCHES)*

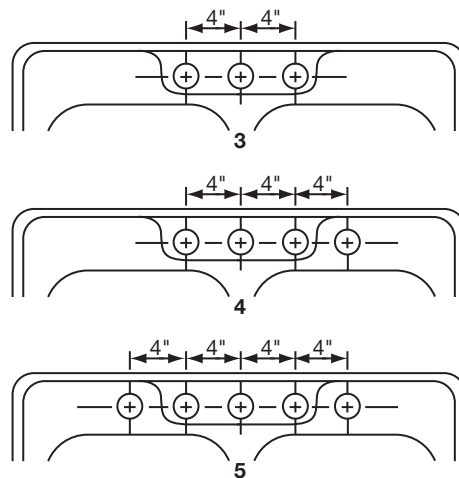
U-Channel Model Number	J-Channel Model Number	Overall		Inside Each Bowl			Cutout in Countertop (1 1/2" Radius Corners)		No. of 1 1/2" Dia. Faucet Holes	Minimum Cabinet Size
		L	W	L	W	D				
		A	B	C	D	E	L	W		
DSE23321	—	33	21 1/4	14	15 3/4	8 1/16	32 3/8	20 5/8	3, 4 or 5	36
DSE23322	DSEJ23322	33	22	14	15 3/4	8 1/16	32 3/8	21 3/8	3, 4 or 5	36

*Length is left to right. Width is front to back.

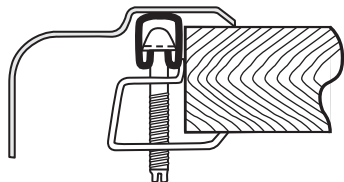


E is Bowl Depth

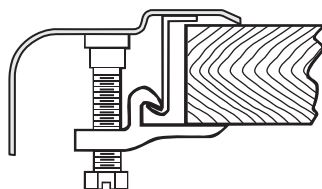
HOLE DRILLING CONFIGURATIONS



U-Channel Type Mounting System



J-Channel Type Mounting System



ALL DIMENSIONS IN INCHES. TO CONVERT TO MILLIMETERS MULTIPLY BY 25.4.

In keeping with our policy of continuing product improvement, Elkay reserves the right to change product specifications without notice.

This specification describes an Elkay product with design, quality and functional benefits to the user. When making a comparison of other producers' offerings, be certain these features are not overlooked.