

FEATURES

Model LK810HA10L2

- Three hole dual handle top mount faucet
- Quarter turn ceramic disc cartridge
- Solid brass construction
- Chrome finish
- Includes spout swing restriction pin

Model LK810HA10T4

- Same as LK810HA10L2 except with 4" wrist blades handles

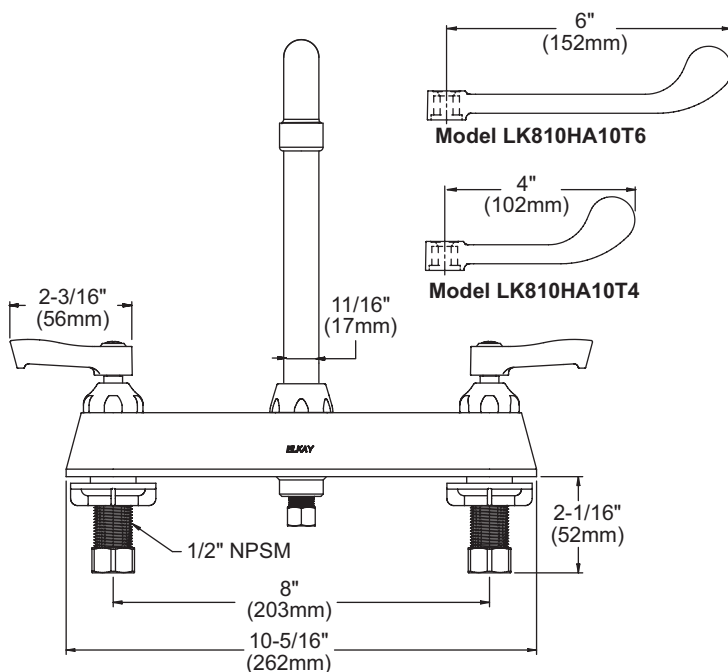
Model LK810HA10T6

- Same as LK810HA10L2 except with 6" wrist blades handles

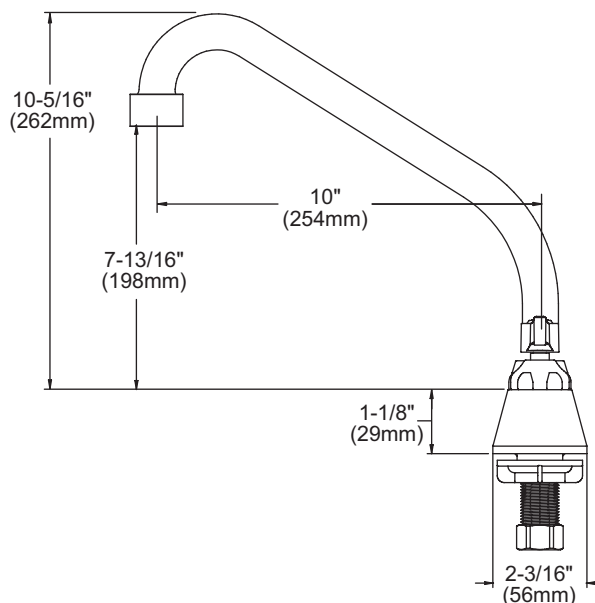
COMPLIES WITH:

- ASME/ANSI A112.18.1
- CSA B125-01
- NSF/ANSI 61
- ADA
- UPC/CUPC
- IAPMO Listed

Exposed Deck Mount 8" Center Commercial Faucet Models LK810HA10L2, LK810HA10T4, LK810HA10T6



**Model LK810HA10L2
FRONT VIEW**

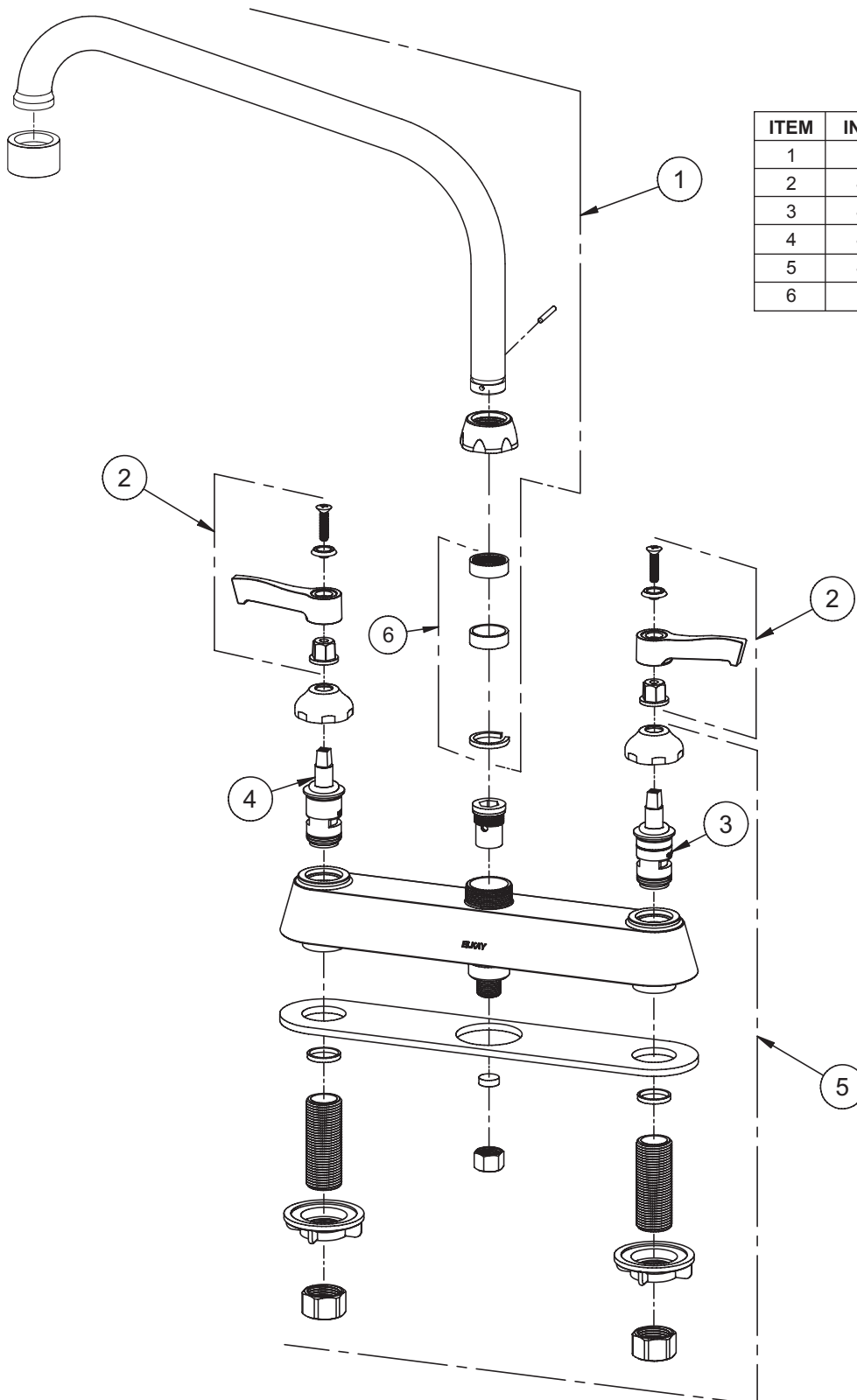


SIDE VIEW

Job Name:	Item #:
Notes:	
Architect/Engineer Approval:	Date:

SEE OTHER SIDE FOR REPLACEMENT PARTS

Exposed Deck Mount 8" Center Commercial Faucet Models LK810HA10L2, LK810HA10T4, LK810HA10T6



ITEM	IND. PART	DESCRIPTION
1	A55393	Spout
2	45918C	Handle
3	45923C	Right Cold Cartridge
4	45924C	Left Hot Cartridge
5	45917C	Body
6	98554C	Backflow Kit