



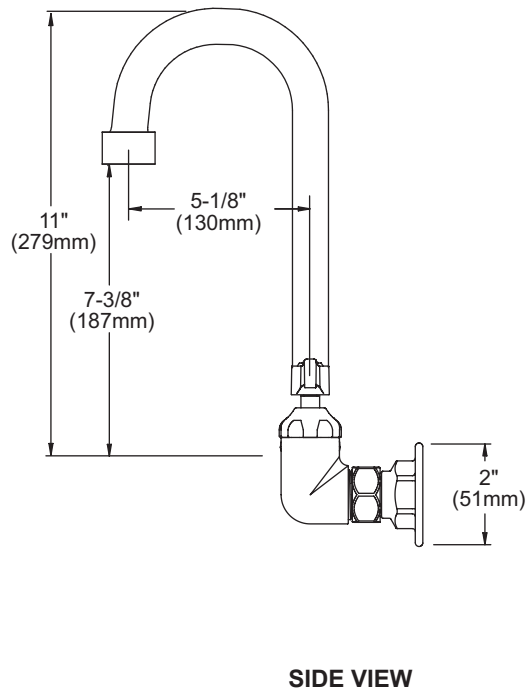
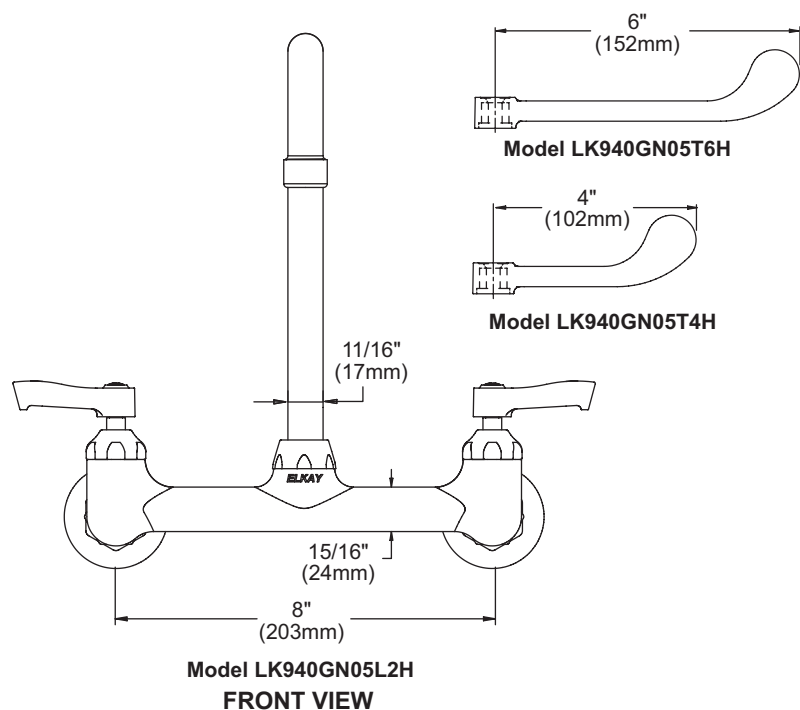
**Wall Mount 8" Center Commercial Faucet
Models LK940GN05L2H, LK940GN05T4H, LK940GN05T6H**

- Two hole dual handle wall mount faucet
- Quarter turn ceramic disc cartridge
- 1/2" adjustable inlets
- Solid brass construction
- Chrome finish
- Includes spout swing restriction pin

- Same as LK940GN05L2H except with 4" wrist blades handles

- Same as LK940GN05L2H except with 6" wrist blades handles

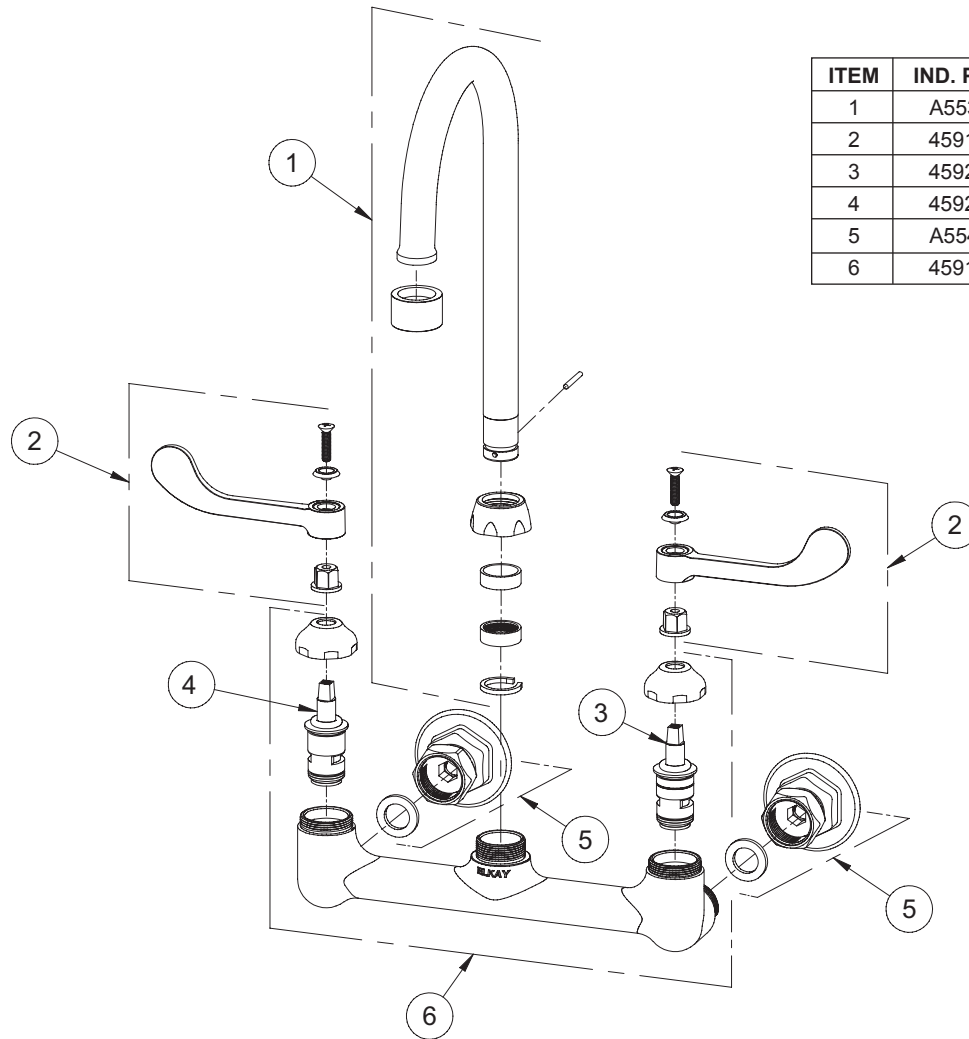
- ASME/ANSI A112.18.1
- CSA B125-01
- NSF/ANSI 61
- ADA
- UPC/CUPC
- IAPMO Listed



Job Name:	Item #:
Notes:	
Architect/Engineer Approval:	Date:

SEE OTHER SIDE FOR REPLACEMENT PARTS

Wall Mount 8" Center Commercial Faucet
Models LK940GN05L2H, LK940GN05T4H, LK940GN05T6H



ITEM	IND. PART	DESCRIPTION
1	A55393	Spout
2	45918C	Handle
3	45923C	Right Cold Cartridge
4	45924C	Left Hot Cartridge
5	A55413	1/2" Adjustable Inlet
6	45917C	Body