

FEATURES**Model LK940GN08L2S**

- Two hole dual handle wall mount faucet
- Quarter turn ceramic disc cartridge
- 1/2" adjustable inlets with integral stops
- Solid brass construction
- Chrome finish
- Includes spout swing restriction pin

Model LK940GN08T4S

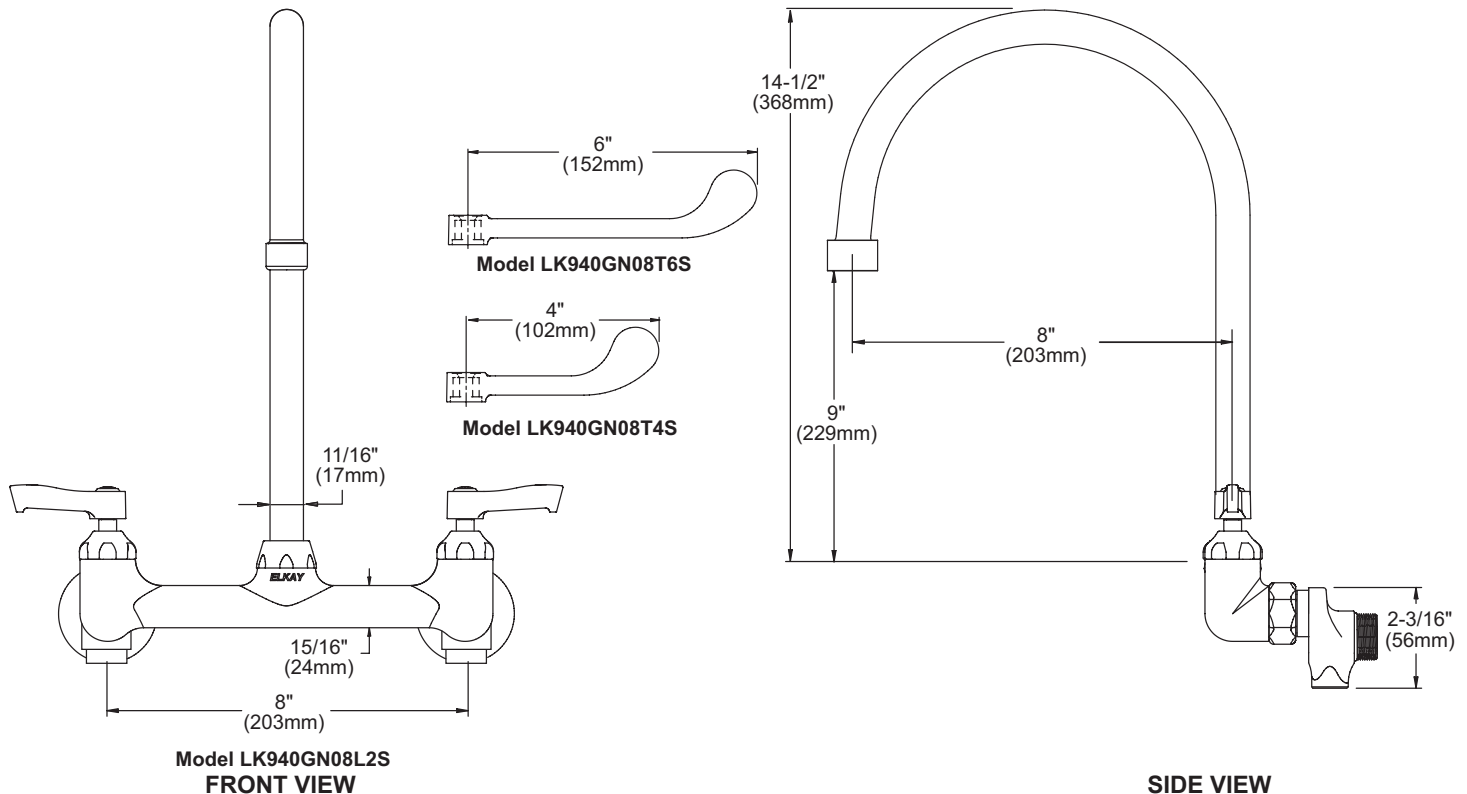
- Same as LK940GN08L2S except with 4" wrist blades handles

Model LK940GN08T6S

- Same as LK940GN08L2S except with 6" wrist blades handles

COMPLIES WITH:

- ASME/ANSI A112.18.1
- CSA B125-01
- NSF/ANSI 61
- ADA
- UPC/CUPC
- IAPMO Listed

**Wall Mount 8" Center Commercial Faucet
Models LK940GN08L2S, LK940GN08T4S, LK940GN08T6S**

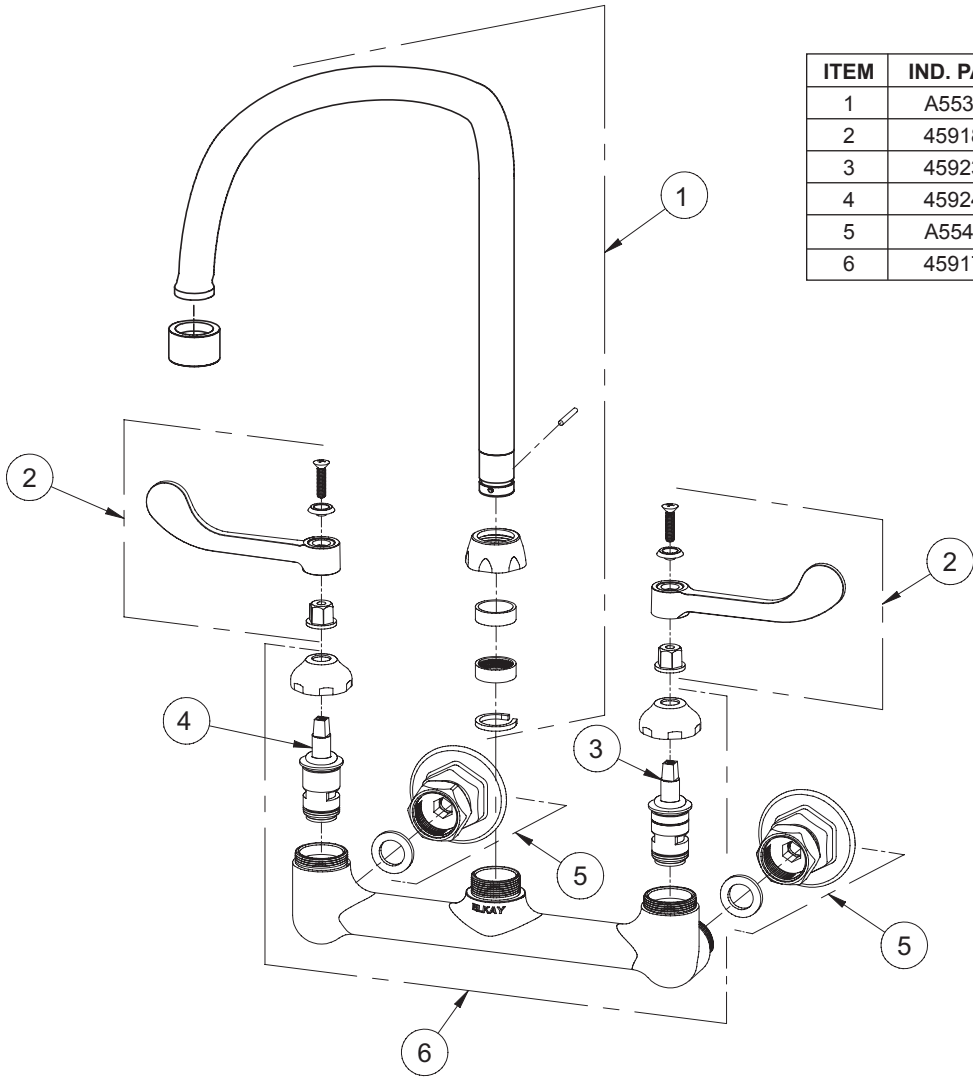
Job Name:	Item #:
Notes:	
Architect/Engineer Approval:	Date:

SEE OTHER SIDE FOR REPLACEMENT PARTS



REPLACEMENT PARTS

Wall Mount 8" Center Commercial Faucet
Models LK940GN08L2S, LK940GN08T4S, LK940GN08T6S



ITEM	IND. PART	DESCRIPTION
1	A55393	Spout
2	45918C	Handle
3	45923C	Right Cold Cartridge
4	45924C	Left Hot Cartridge
5	A55414	1/2" Offset Shutoff
6	45917C	Body