

**FEATURES****Model LK940HA10L2H**

- Two hole dual handle wall mount faucet
- Quarter turn ceramic disc cartridge
- 1/2" adjustable inlets
- Solid brass construction
- Chrome finish
- Includes spout swing restriction pin

**Model LK940HA10T4H**

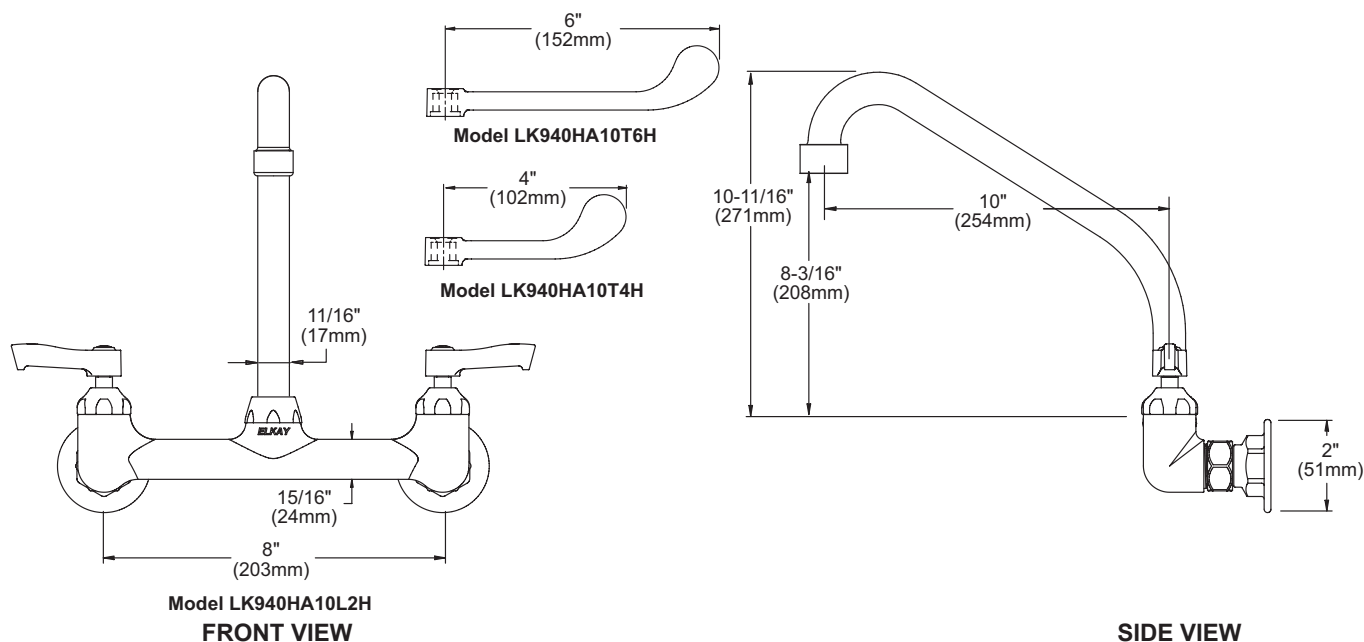
- Same as LK940HA10L2H except with 4" wrist blades handles

**Model LK940HA10T6H**

- Same as LK940HA10L2H except with 6" wrist blades handles

**COMPLIES WITH:**

- ASME/ANSI A112.18.1
- CSA B125-01
- NSF/ANSI 61
- ADA
- UPC/CUPC
- IAPMO Listed

**Wall Mount 8" Center Commercial Faucet  
Models LK940HA10L2H, LK940HA10T4H, LK940HA10T6H**

Job Name:

Item #:

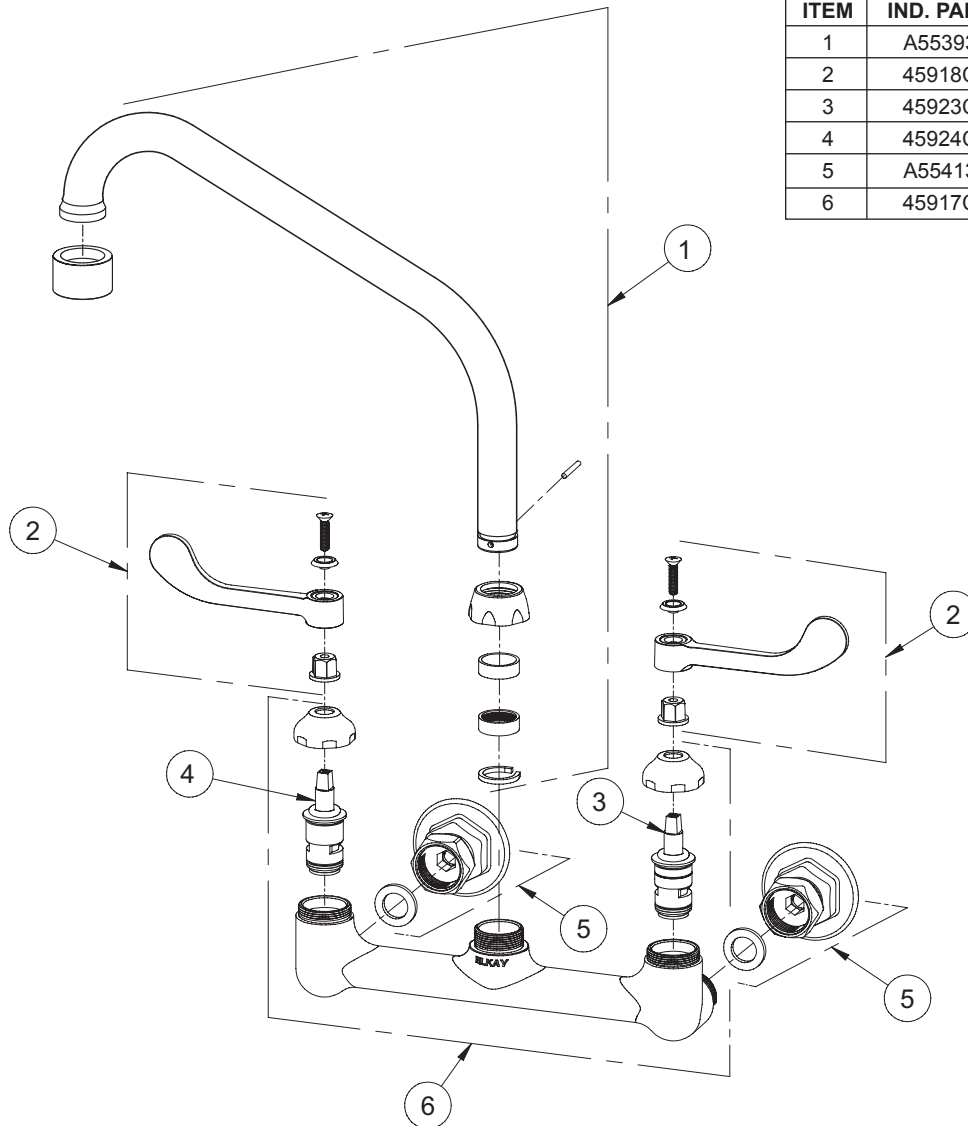
Notes:

Architect/Engineer Approval:

Date:

SEE OTHER SIDE FOR REPLACEMENT PARTS

**Wall Mount 8" Center Commercial Faucet**  
**Models LK940HA10L2H, LK940HA10T4H, LK940HA10T6H**



ITEM	IND. PART	DESCRIPTION
1	A55393	Spout
2	45918C	Handle
3	45923C	Right Cold Cartridge
4	45924C	Left Hot Cartridge
5	A55413	1/2" Adjustable Inlet
6	45917C	Body