

FEATURES**Model LK940HA10L2S**

- Two hole dual handle wall mount faucet
- Quarter turn ceramic disc cartridge
- 1/2" adjustable inlets with integral stops
- Solid brass construction
- Chrome finish
- Includes spout swing restriction pin

Model LK940HA10T4S

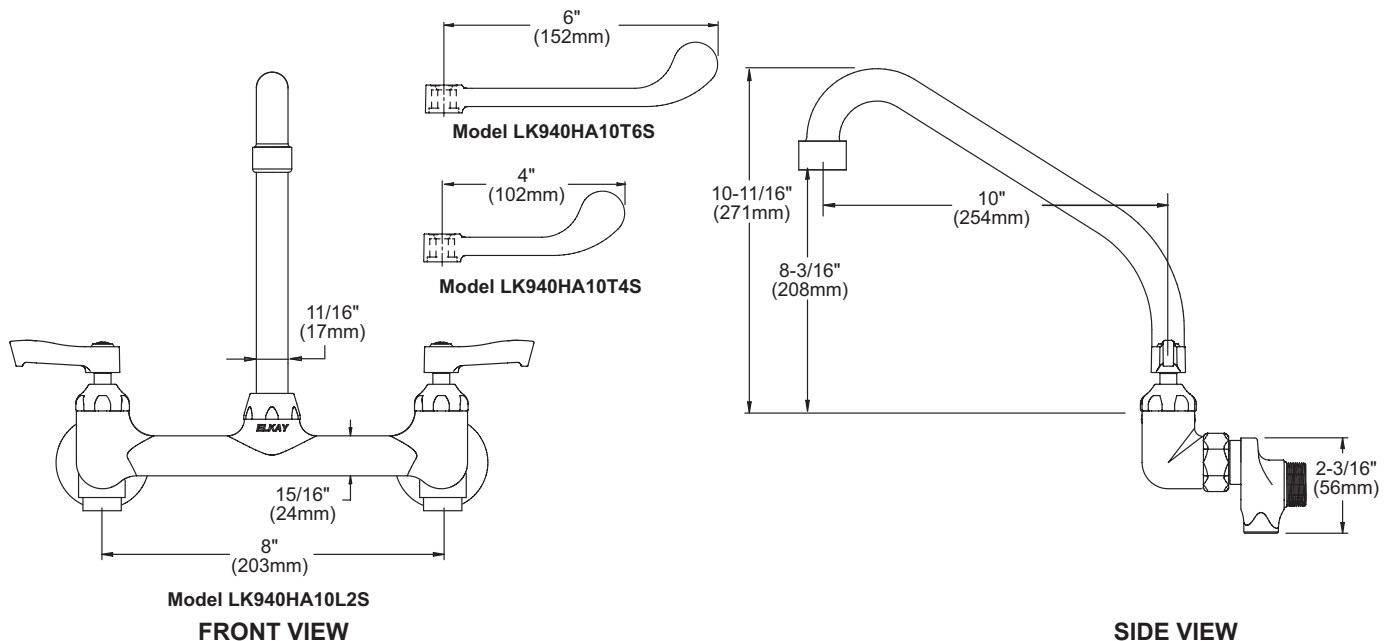
- Same as LK940HA10L2S except with 4" wrist blades handles

Model LK940HA10T6S

- Same as LK940HA10L2S except with 6" wrist blades handles

COMPLIES WITH:

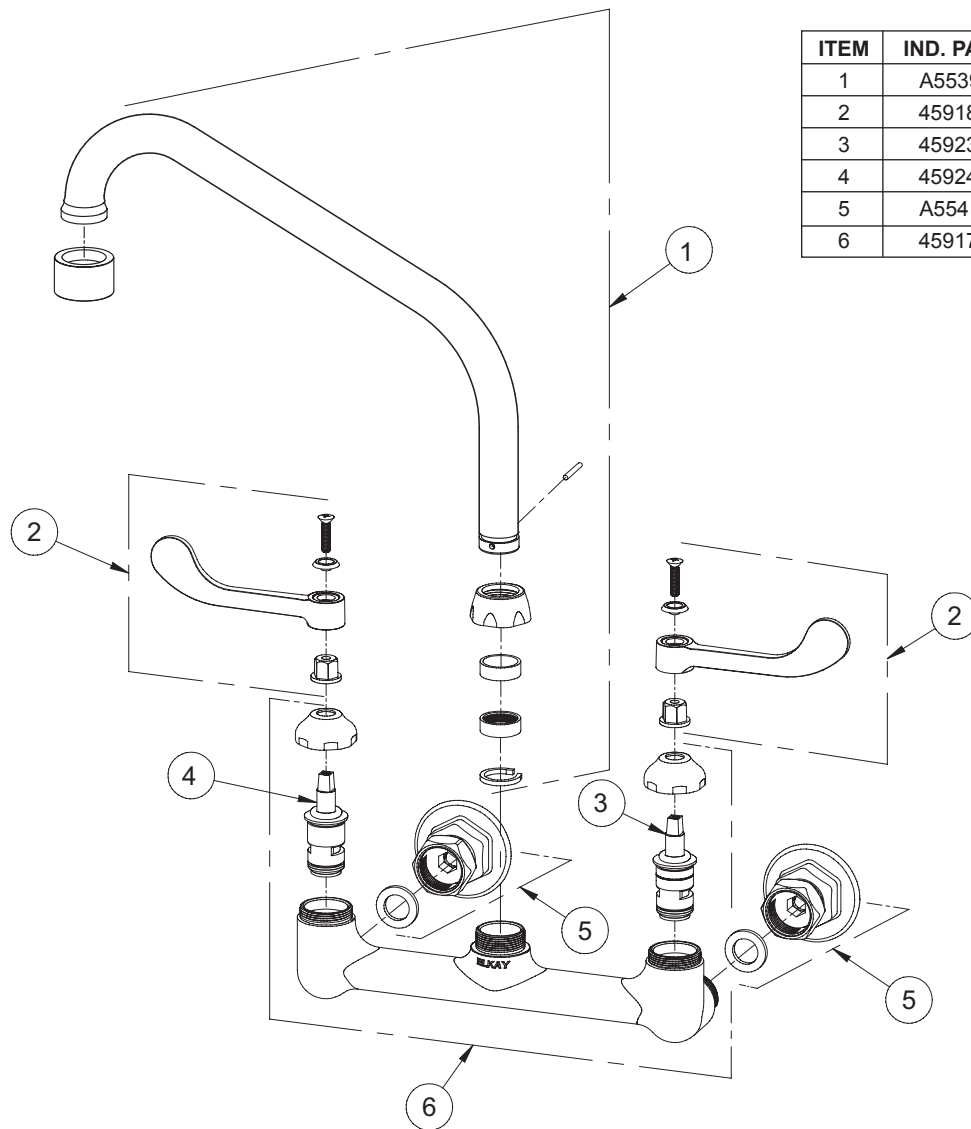
- ASME/ANSI A112.18.1
- CSA B125-01
- NSF/ANSI 61
- ADA
- UPC/CUPC
- IAPMO Listed

**Wall Mount 8" Center Commercial Faucet
Models LK940HA10L2S, LK940HA10T4S, LK940HA10T6S**

| | |
|-------------------------------------|----------------|
| Job Name: | Item #: |
| Notes: | |
| Architect/Engineer Approval: | Date: |

SEE OTHER SIDE FOR REPLACEMENT PARTS

Wall Mount 8" Center Commercial Faucet Models LK940HA10L2S, LK940HA10T4S, LK940HA10T6S



| ITEM | IND. PART | DESCRIPTION |
|------|-----------|----------------------|
| 1 | A55393 | Spout |
| 2 | 45918C | Handle |
| 3 | 45923C | Right Cold Cartridge |
| 4 | 45924C | Left Hot Cartridge |
| 5 | A55414 | 1/2" Offset Shutoff |
| 6 | 45917C | Body |