

FEATURES**Model LK940VS07L2S**

- Two hole dual handle wall mount faucet
- Quarter turn ceramic disc cartridge
- 1/2" adjustable inlets with integral stops
- Solid brass construction
- Chrome finish
- Includes spout swing restriction pin

Model LK940VS07T4S

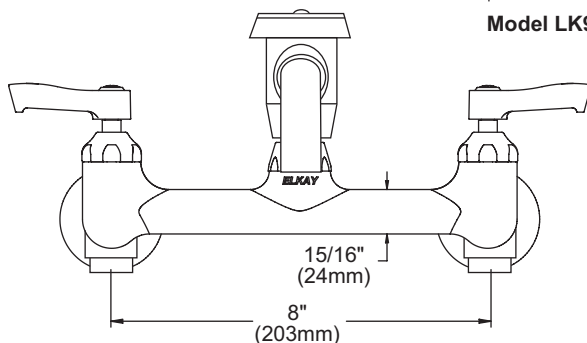
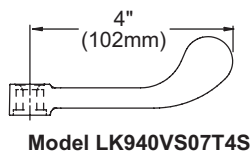
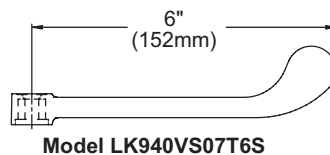
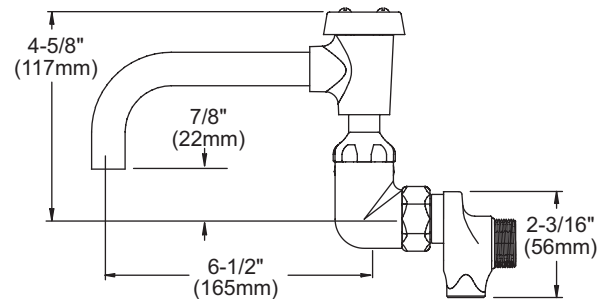
- Same as LK940VS07L2S except with 4" wrist blades handles

Model LK940VS07T6S

- Same as LK940VS07L2S except with 6" wrist blades handles

COMPLIES WITH:

- ASME/ANSI A112.18.1
- CSA B125-01
- NSF/ANSI 61
- ADA
- UPC/CUPC
- IAPMO Listed

**Wall Mount 8" Center Commercial Faucet
Models LK940VS07L2S, LK940VS07T4S, LK940VS07T6S****Model LK940VS07L2S
FRONT VIEW****SIDE VIEW**

Job Name:	Item #:
Notes:	
Architect/Engineer Approval:	Date:

SEE OTHER SIDE FOR REPLACEMENT PARTS

**Wall Mount 8" Center Commercial Faucet
Models LK940VS07L2S, LK940VS07T4S, LK940VS07T6S**

