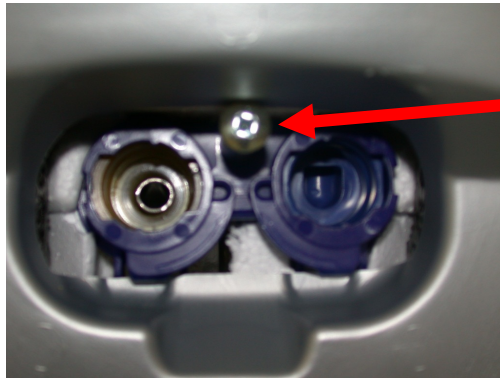


How to replace the cartridge.

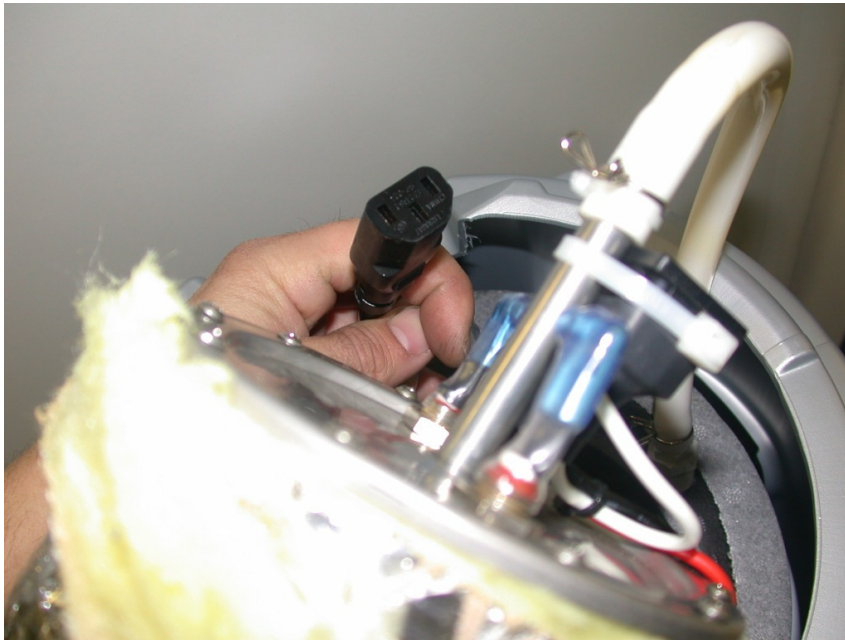
- Unplug the water cooler.
- Empty the cold and the hot tank before removing the faucets.
- See instruction on page 7 on how to remove the faucets.
- Water cooler pictures maybe different.

COLD WATER TANK

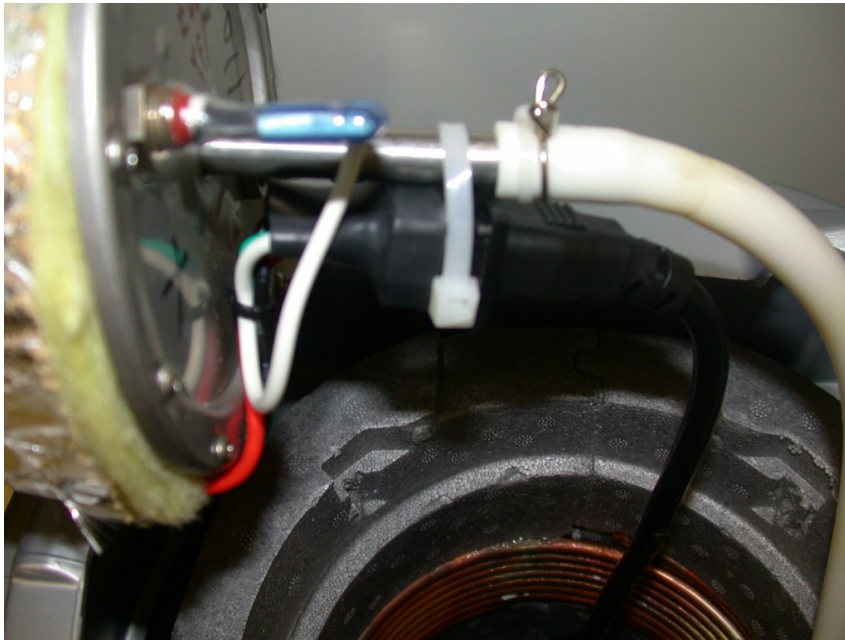


- Remove the safety lock with a square head screwdriver.
- Remove the cold and hot water tank by pulling upward.

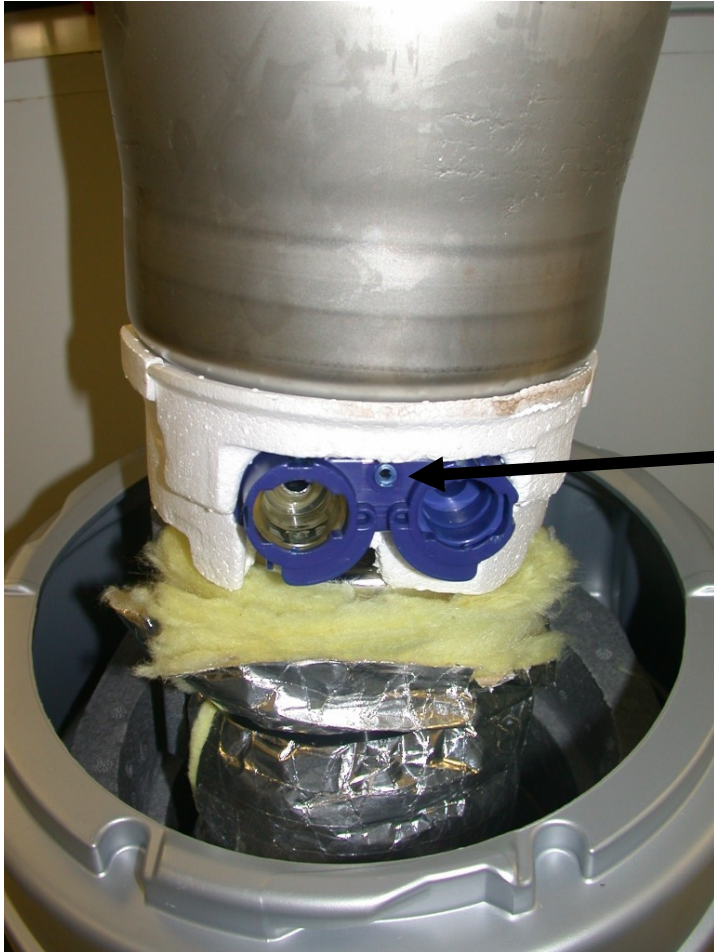




- Unplug the hot tank from the power cord



- Plug the power cord to the NEW hot tank.



- Slide the cold and hot tank inside of the cooler.
- Remove the safety pin with a screwdriver before installing.

ALIGNMENT



- Align the blue plate for the faucets with the opening on the water cooler.

Installing the 1/4 turn faucets



- Place the faucet sideways.
- Align the black wing of the faucet with the opening on the blue plate (A)
- Push on the faucet so that the black wing goes inside the blue plate (B)
- When the wings are inside the blue plate, you turn the faucet a 1/4 turn.

Cold side faucet



Screw back the safety pin.

- Install the blue faucet on the right side.
- Insert the faucet sideways
- When the black wings are inside the blue plate.
- Turn the faucet a $\frac{1}{4}$ turn to the left while applying pressure to keep the black wings inside the blue plate.



Hot side faucet



- Install the white faucet on the left side.
- Insert the faucet sideways

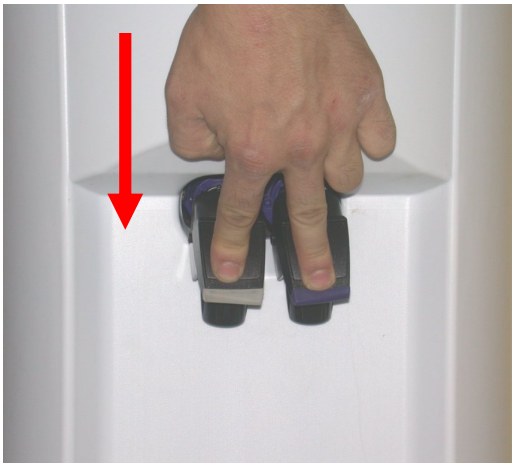


- When the black wings are inside the blue plate.
- Turn the faucet a $\frac{1}{4}$ turn to the right while applying pressure to keep the black wings inside the blue plate.

Faucets tests.



- Pull on both faucets to verify if the black wings are secured inside the blue plate.

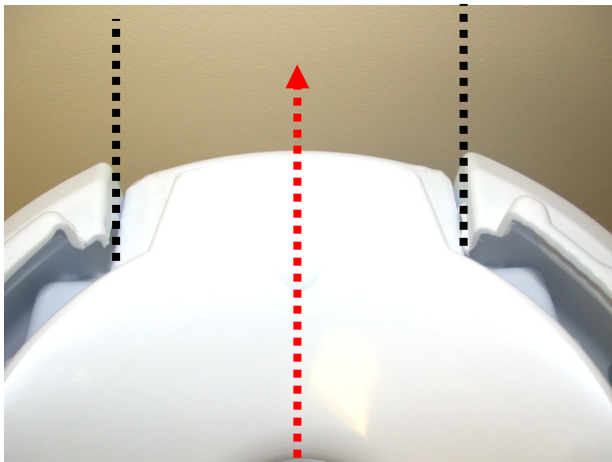


- Push down on the handles to validate the installation.

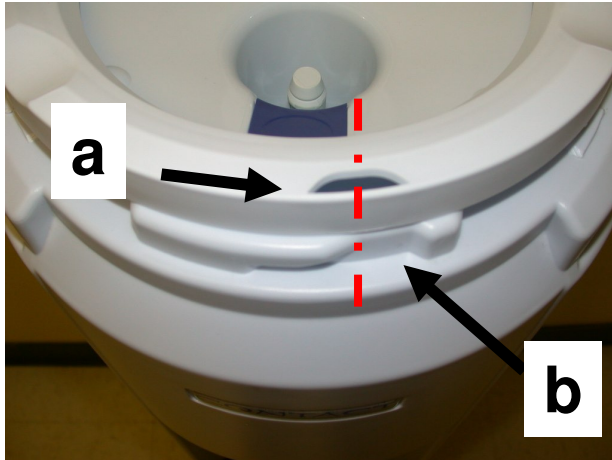
Cone installation



- Place the cone on top on the cold water tank.
- The handle of the cone must be on the backside.
- Center the handle on the top of the cooler.
- Apply pressure on the cone to clip it on the cold water tank.



Ring installation



- Place the ring on top of the cooler so that the opening on the ring (a) is align with the ring lock (b)
- Engage the ring in the lock.
- Turn the ring clockwise.