

PRODUCT SPECIFICATIONS

Halsey Taylor Floor Mount Cooler, Non-Filtered 20 GPH Stainless. Chilling Capacity of 20.0 GPH (gallons per hour) of 50° F drinking water, based on 80° F inlet water and 90° F ambient, per ASHRAE 18 testing. Furnished with Double Bubbler™. Mechanical Top Bubbler Button activation. Product shall be Floor Mount/Freestanding, for Indoor applications, serving 1 station(s). Unit shall be certified to UL 399 and CAN/CSA C22.2 No. 120. Unit shall be lead-free design which is certified to NSF/ANSI 61 & 372 (lead free) and meets Federal and State low-lead requirements.

Order ID:	7226200083
Finish:	Stainless Steel
Power:	115V/60Hz
Bubbler Style:	Double Bubbler™
Activation by:	Mechanical Top Bubbler Button
Mounting Type:	Floor Mount/Freestanding
Chilling Option*:	20.0 GPH
Rated Watts:	665
Dimensions (L x W x H):	16" x 13-1/4" x 40"
Approx. Shipping Weight:	75 lbs.
Installation Location:	Indoor
No. of Stations Served:	1
*Based on 80° F inlet water & 90° F ambient air temp for 50° F chilled drinking water.	

- Mechanically-Activated bubbler continues to supply water in event of service disruptions.
- Exclusive Double Bubbler which projects two separate streams that converge to form a fuller, more satisfying drink.

COOLING SYSTEM

- Compressor: Hermetically-sealed, reciprocating type, single phase. Sealed-in lifetime lubrication.
- Condenser: Fan cooled, copper tube with aluminum fins. Fan motor is permanently lubricated.
- Cooling Unit: Combination tube-tank type. Continuous copper tubing with is fully insulated with EPS foam that meets UL requirements for self-extinguishing material.
- Refrigerant Control: Refrigerant R-134a is controlled by accurately calibrated capillary tube.
- Temperature Control: Easily accessible enclosed adjustable thermostat is factory preset. Requires no adjustment other than for altitude requirements.



AMERICAN PRIDE. A LIFETIME TRADITION. Like your family, the Elkay family has values and traditions that endure. For almost a century, Elkay has been a family-owned and operated company, providing thousands of jobs that support our families and communities.



Included with Product: Water Cooler

PRODUCT COMPLIANCE

Buy American Act
CAN/CSA C22.2 No. 120
NSF/ANSI 61 & 372 (lead free)
UL 399



[Installation Instructions \(PDF\)](#)

5 Year Limited Warranty on the refrigeration system of the unit. Electrical components and water system are warranted for 12 months from date of installation. **Warranty pertains to drinking water applications only. Non-drinking water applications are not covered under warranty.**

[Warranty \(PDF\)](#)

OPTIONAL ACCESSORIES

HWF172 - WaterSentry VII Filter Kit (Coolers + Fountains)
27082C - Halsey Taylor SCWT Cooler Back Plate - Stainless
97446C - Bubbler Kit Vandal-Resistant
96852CA - Halsey Taylor Gooseneck Glass Filler Kit

PART: _____ QTY: _____

PROJECT: _____

CONTACT: _____

DATE: _____

NOTES: _____

APPROVAL: _____

In keeping with our policy of continuing product improvement, Halsey Taylor reserves the right to change product specifications without notice. Please visit Halseytaylor.com for the most current version of Halsey Taylor product specification sheets. This specification describes a Halsey Taylor product with design, quality, and functional benefits to the user. When making a comparison of other producers' offerings, be certain these features are not overlooked.

Halsey Taylor®

SPECIFICATIONS

Halsey Taylor Floor Mount Cooler

Non-Filtered 20 GPH Stainless

Model SCWT20A SS

ROUGH-IN, MOUNTING, AND ELECTRICAL INSTRUCTIONS

This cooler may be installed against the wall or freestanding from the wall.
NOTE: With slight modifications, rough-in heights from 16.5" and 24.3" can be accommodated. 2" maximum may be cut from the tailpiece provided.

For against-the-wall installation

Provide 2" x 4" wood blocking back of finished wall for securing cooler flush with finished wall. (Refer to rough-in drawing.) Install 1 1/4" trap 5 1/4" from wall face to center of trap inlet. Trap not furnished. Install 3/8" IPS service stop to building supply line. Service stop not furnished.

Trap and service stop not included.

OPERATING PRESSURES

These products are designed to operate on 20 psi to 105 psi supply line pressure.

ELECTRICAL

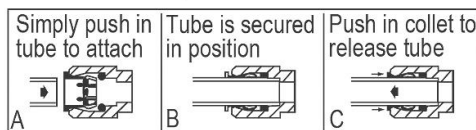
Electrical receptacle to be installed to receive 3-wire parallel blade grounding type male plug. Note cord length is 4 feet from cord exit point in cooler.

For freestanding installation

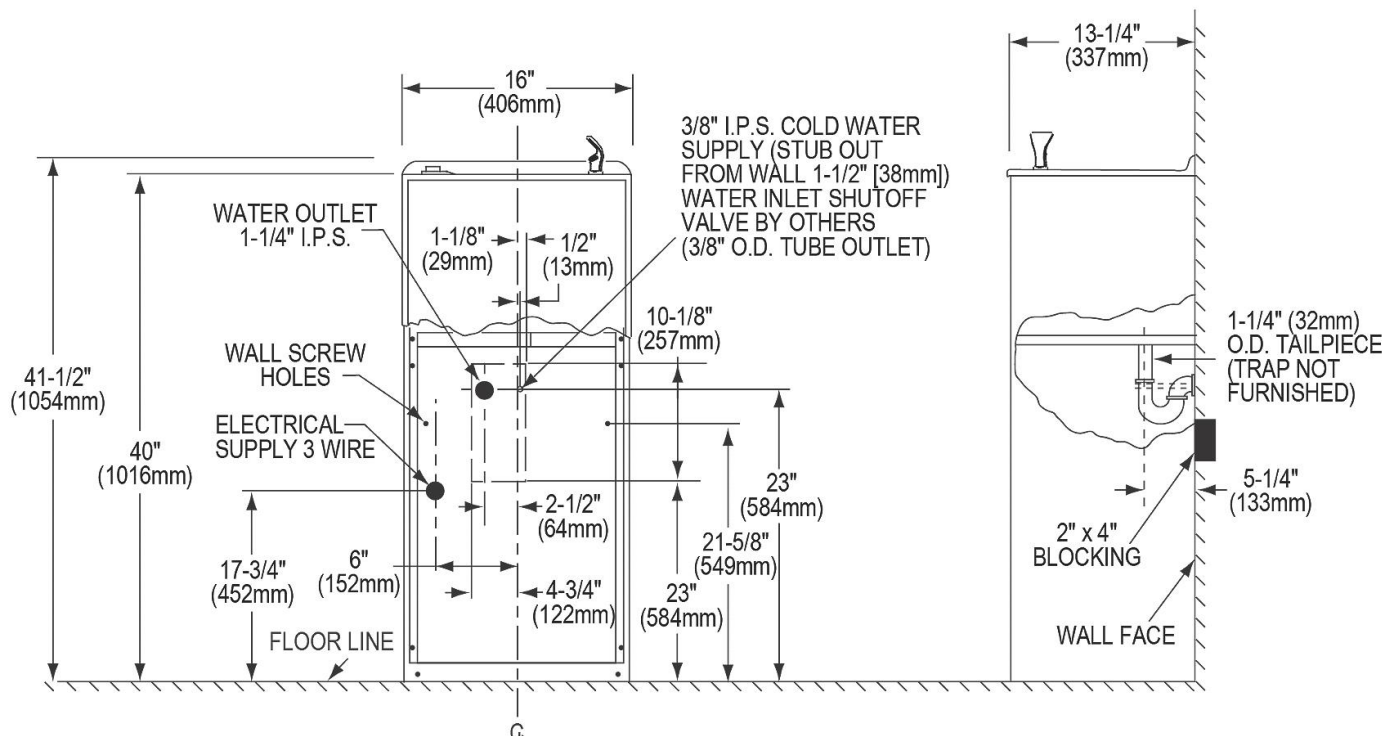
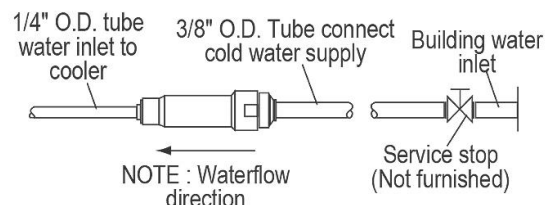
A hole is provided in back of cabinet for plumbing entrance. See rough-in drawing and outline drawing. Install 1 1/4" IPS trap inside cabinet. Trap not furnished. Install 3/8" IPS service stop to building supply line outside of cooler cabinet. Service stop not furnished.

NOTE: Unit is not rated for outdoor use.

OPERATION OF QUICK CONNECT FITTINGS



Pushing tube in before pulling it out helps to release tube



NOTE: New installations must use Ground Fault Circuit Interrupter (GFCI).

It is highly recommended that the circuit be dedicated and the load protection be sized for 20 amps.

A service supply stop must be installed at the cooler inlet line.

Insure proper ventilation by maintaining 4" (102mm) MIN. clearance from cabinet louvers to wall on each side of cooler.

In keeping with our policy of continuing product improvement, Halsey Taylor reserves the right to change product specifications without notice. Please visit Halseytaylor.com for the most current version of Halsey Taylor product specification sheets. This specification describes a Halsey Taylor product with design, quality, and functional benefits to the user. When making a comparison of other producers' offerings, be certain these features are not overlooked.