

PRODUCT SPECIFICATIONS

Halsey Taylor Wall Mount Fully Recessed Fountain, Non-Filtered Non-Refrigerated Stainless. Furnished with Double Bubbler. Mechanical Front Bubbler Button activation. Product shall be Recessed Mount, for Indoor applications, serving 1 station(s). Unit shall be lead-free design which is certified to NSF/ANSI 61 & 372 (lead free) and meets Federal and State low-lead requirements.

Order ID:	7688000083
Finish:	Stainless Steel
Power:	No Electrical Required
Bubbler Style:	Double Bubbler
Activation by:	Mechanical Front Bubbler Button
Mounting Type:	Recessed Mount
Chilling Option:	Non-refrigerated
Dimensions (L x W x H):	19" x 11-3/16" x 32-1/2"
Approx. Shipping Weight:	33 lbs.
Installation Location:	Indoor
No. of Stations Served:	1

- Mechanically-Activated bubbler continues to supply water in event of service disruptions.
- Exclusive Double Bubbler which projects two separate streams that converge to form a fuller, more satisfying drink.



AMERICAN PRIDE. A LIFETIME TRADITION. Like your family, the Elkay family has values and traditions that endure. For almost a century, Elkay has been a family-owned and operated company, providing thousands of jobs that support our families and communities.



Included with Product: Fountain

▼ Ships in multiple boxes.

PRODUCT COMPLIANCE

Buy American Act

NSF/ANSI 61 & 372 (lead free)



[Installation Instructions \(PDF\)](#)

Water Systems are warranted for 12 months from date of installation.

Warranty pertains to drinking water applications only. Non-drinking water applications are not covered under warranty.

[Warranty \(PDF\)](#)

OPTIONAL ACCESSORIES

HWF172 - WaterSentry VII Filter Kit (Coolers + Fountains)
98501C - Elkay Bubbler - Stream Saver Flexi-Guard
98481C - Accessory - Bubbler Kit Water-Efficient Vandal-Resistant

PART: _____ QTY: _____

PROJECT: _____

CONTACT: _____

DATE: _____

NOTES: _____

APPROVAL: _____

In keeping with our policy of continuing product improvement, Halsey Taylor reserves the right to change product specifications without notice. Please visit Halseytaylor.com for the most current version of Halsey Taylor product specification sheets. This specification describes a Halsey Taylor product with design, quality, and functional benefits to the user. When making a comparison of other producers' offerings, be certain these features are not overlooked.

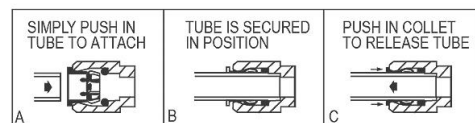
INSTALLATION INSTRUCTIONS

1. Remove lower panel from drinking fountain by removing the two screws at the lower corners. Rotate the bottom of the panel out and pull gently downward to remove.
2. Water inlet tube to be 3/8" O.D. Waste tailpiece for slip trap is 1-1/4" O.D. Contractor to supply waste trap in accordance with local codes.
3. Connecting lines to be copper and thoroughly flushed to remove all foreign matter before connection to fountain assembly. The furnished strainer should be installed in the supply line.
4. Connect the fountain to supply line with a shut off valve and install a 3/8" (10mm) water line between the valve and fountain. Connect the 3/8 line to the inlet of the strainer by loosening the retaining nut and inserting the tubing past the o-rings (approximately 3/4"). Finger tighten nut to lock tubing in place.
5. Stream height is factory set at 35 psi. If supply pressure varies greatly from this, turn adjustment screw on regulator. Clockwise adjustment will raise the stream and counter-clockwise adjustment will lower the stream. For best adjustments, stream should hit the basin 6-1/2" (165mm) from the bubbler.

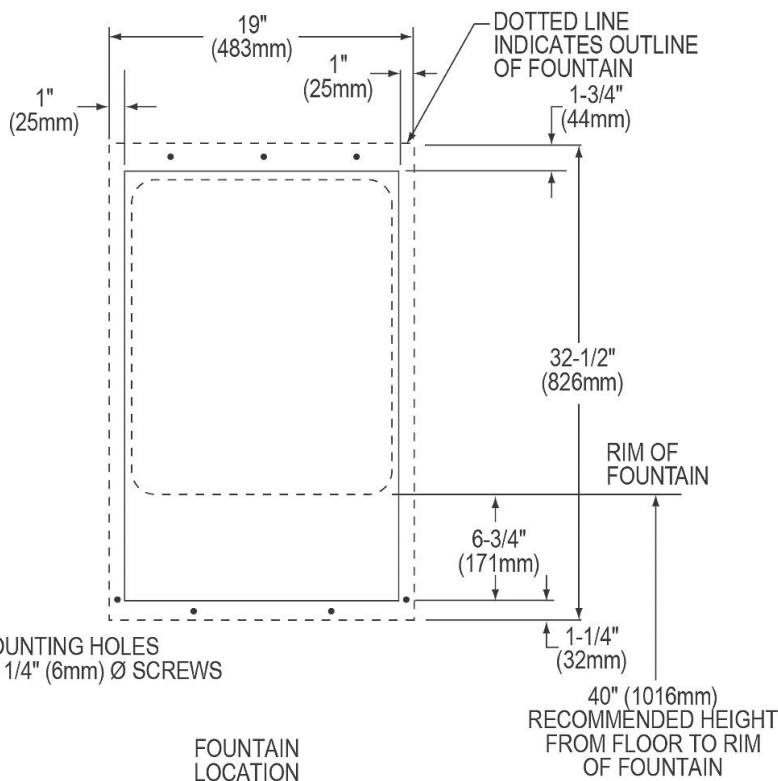
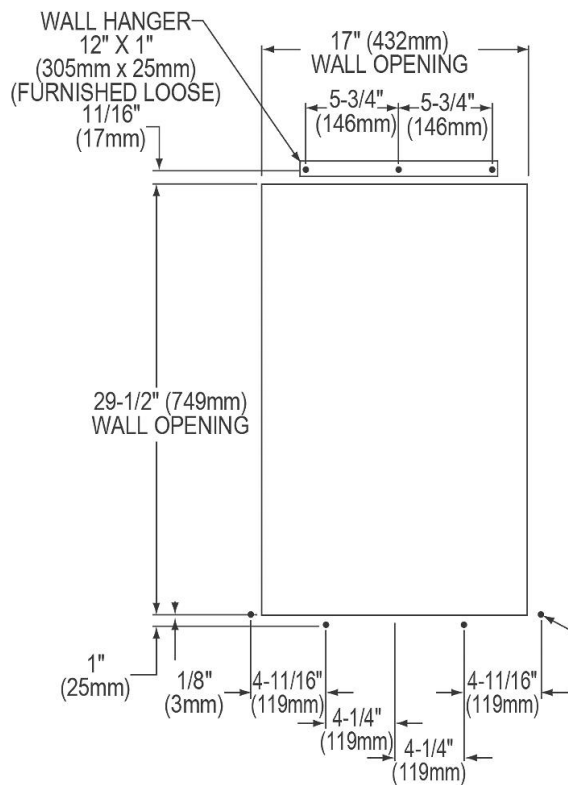
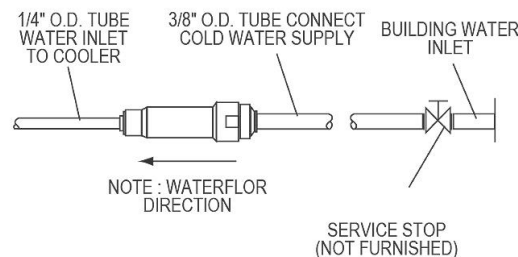
ACTUATION OF QUICK CONNECT WATER FITTINGS

Fountain is provided with lead free connectors which utilize an o-ring water seal. To remove tubing from the fitting, relieve water pressure, push in on gray collar while pulling on the tubing. To insert tubing, push tube straight into the fitting until it reaches a positive stop (approximately 3/4" [19mm]). See Fig. 1.

OPERATION OF QUICK CONNECT FITTINGS



PUSHING TUBE IN BEFORE PULLING IT OUT HELPS TO RELEASE TUBE



WALL CUTOUT
WITH BOLT LOCATION

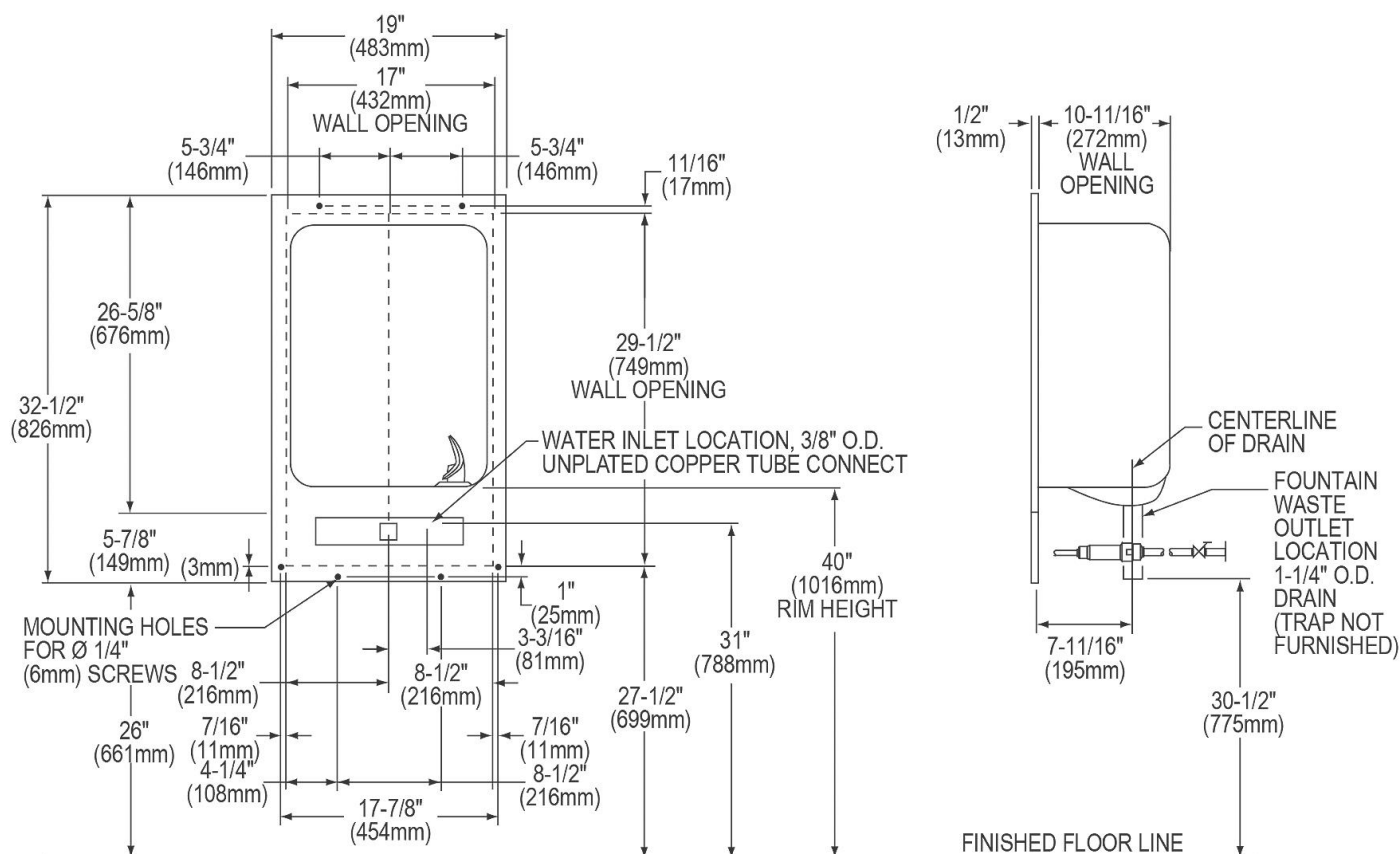
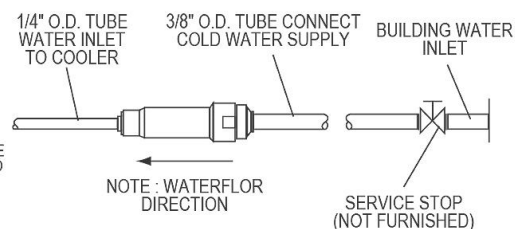
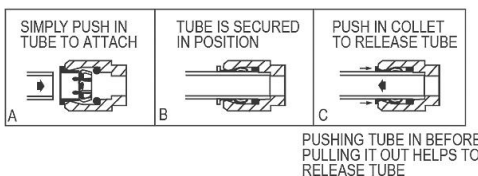
FOUNTAIN
LOCATION

In keeping with our policy of continuing product improvement, Halsey Taylor reserves the right to change product specifications without notice. Please visit Halseytaylor.com for the most current version of Halsey Taylor product specification sheets. This specification describes a Halsey Taylor product with design, quality, and functional benefits to the user. When making a comparison of other producers' offerings, be certain these features are not overlooked.

INSTALLER NOTE

INSTALLER NOTE
This drinking fountain is furnished with a bubbler and valve including all connecting fittings which are manufactured of completely lead free material. Shut off valve (not furnished) to accept 3/8" O.D. unplated copper tube.

OPERATION OF QUICK CONNECT FITTINGS



In keeping with our policy of continuing product improvement, Halsey Taylor reserves the right to change product specifications without notice. Please visit Halseytaylor.com for the most current version of Halsey Taylor product specification sheets. This specification describes a Halsey Taylor product with design, quality, and functional benefits to the user. When making a comparison of other producers' offerings, be certain these features are not overlooked.

